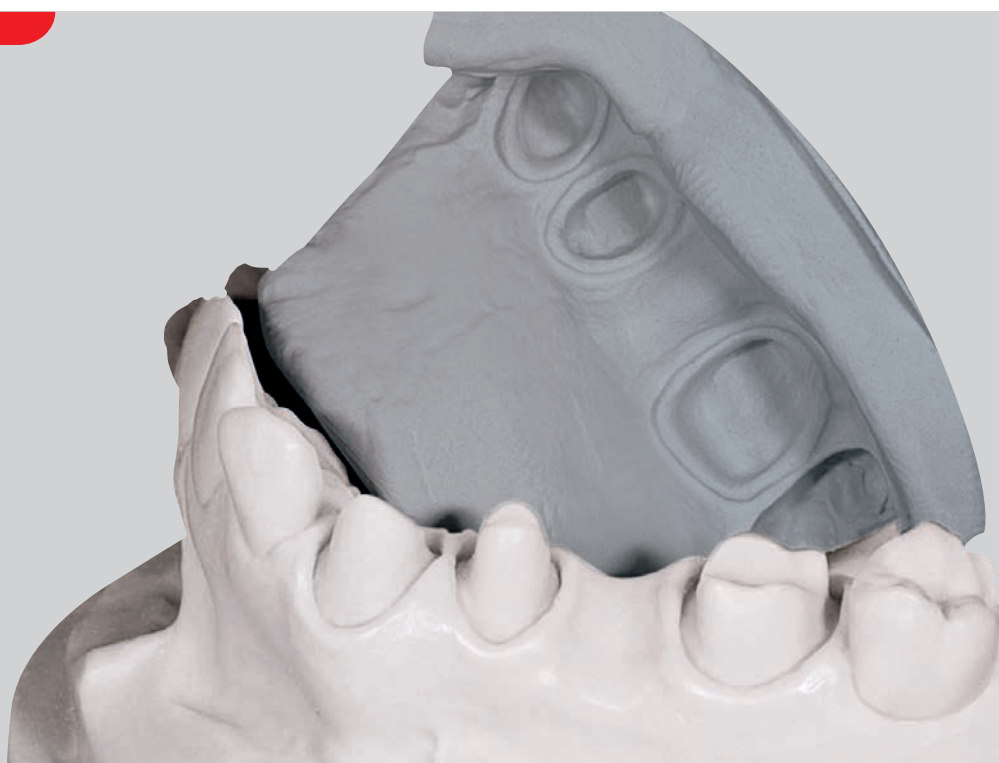


LAB SILICONES



Simplify your work

Lab Silicone Solutions, a wide range of silicones to simplify the activities carried out in the dental laboratory, include **Zetalabor**, **Titanium**, **Platinum 85**, **Platinum 95** and **Elite Transparent**.

ZETALABOR

Rigid C-Silicone Lab Putty

Zetalabor allows time-saving procedures and improves the daily performance of the dental technician.

APPLICATIONS

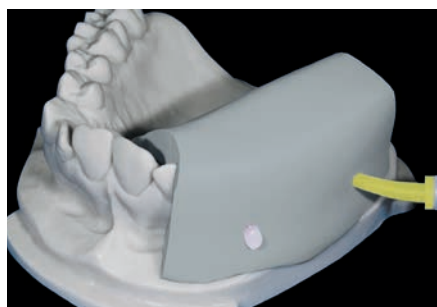
- Matrix to build partial or full dentures on the master model
- Control matrix for designing metal structures
- Models for repairing/duplicating full dentures
- Matrix for making temporary crowns/bridges
- Matrix for reproduction of gingival tissue on the models (indirect technique)
- Isolation of dentures in the flask

ADVANTAGES

- Smooth surface after polymerization
- Accurate **reproduction of details**
- Reliable **dimensional stability**
- High final hardness
- Pigmented free formulation
- Boil-proof



Control matrix for designing metal structure



Matrix for reproduction of gingival tissue

TITANIUM

Extra Rigid C-Silicone Lab Putty

Titanium offers an exclusive formulation that uses specific derivatives to achieve rigidity and high heat resistance.

APPLICATIONS

- Models for dentures repair
- Control matrix for designing metal structures
- Isolation of dentures in the flask

ADVANTAGES

- Extra **rigid formulation**
- High **heat resistance**
- Good dimensional stability
- Easy-to-cut



Denture Repair



Matrix for making temporary crowns/bridges

PLATINUM 85

Rigid A-Silicone Lab Putty

Platinum 85 is an easy-to-use lab silicone characterized by high precision and long-term dimensional stability.

APPLICATIONS

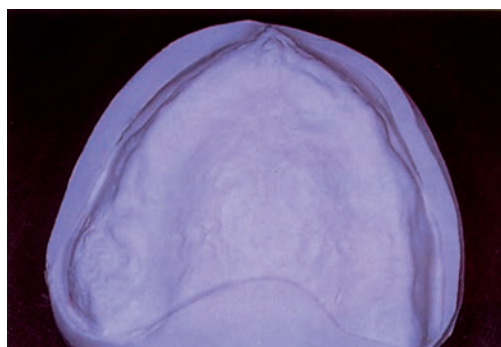
- Matrix to build partial or full dentures on the master model
- Ceramics technique printed in the verticator
- Control matrix for designing metal structures
- Matrix support for metal-free aesthetic procedures
- Isolation of dentures in the flask
- Matrix for making temporary crowns/bridges

ADVANTAGES

- Smooth surface
- Very high **heat resistance** (above 200°C)
- Excellent **definition of details**
- Minimum **linear dimensional change** after 24 hours (-0.058%)
- Chemically bonds to similar A-Silicones
- Easy-to-dose and mix



Control matrix for designing the metal structures



Die in total dentures

PLATINUM 95

Extra-Rigid A-Silicone Lab Putty

Platinum 95 is an easy-to-use lab silicone characterized by high rigidity and long-term dimensional stability.

APPLICATIONS

- Full denture relinings
- Ceramics technique printed in the verticulator
- Control matrix for designing the metal structures
- Models for dentures repair
- Bite registration key for positioning in articulator
- Matrix support for metal-free aesthetic procedures
- Insulation of dentures in the flask

ADVANTAGES

- Very high **final hardness** (95 Shore A)
- Minimum **linear dimensional change** after 24 hours (-0.058%)
- Very high **heat resistance** (over 200°C)
- Chemically bonds to similar A-Silicones
- Easy-to-dose and mix



Ceramics technique printed in the verticulator

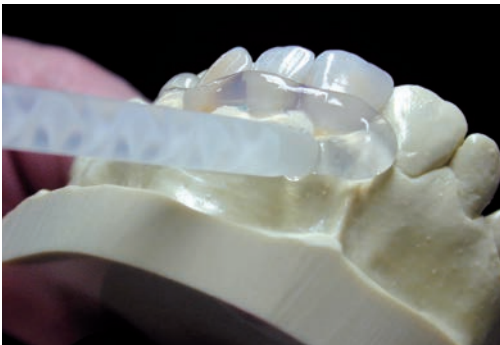
ELITE TRANSPARENT

Clear A-Silicone Fluid

Elite Transparent is a transparent and medium-consistency auto-mixing lab silicone that reproduces wax patterns faithfully and enables accurate reproduction in light-curing composite.

ADVANTAGES

- Extreme **fluidity**
- High **transparency**
- Oxygen-free light-curing composite
- High final hardness: 72 Shore A
- Automatic dosing with 1:1 mixing cartridge



High fluidity during application



High degree of transparency



High rigidity to produce composite without deformations



Final result: does not effect the working properties of light-curing composites



lab silicones solutions
Simplify your work

Zhermack 
Dental

LAB SILICONES



PACKAGING

| | |
|-------------------------------|--|
| C400791 ZETALABOR | 900 g tub + measuring scoop |
| C400790 ZETALABOR | 2.6 Kg tub + measuring scoop |
| C400798 ZETALABOR | 5 Kg tub + measuring scoop + 2 x 60 ml tubes of Indurent Gel |
| C400811 ZETALABOR | 5 Kg tub + measuring scoop |
| C400804 ZETALABOR | 10 Kg tub + measuring scoop |
| C400812 ZETALABOR | 25 Kg tub + measuring scoop |
| C400605 TITANIUM | 2.6 Kg tub + measuring scoop |
| C400818 TITANIUM | 5 Kg tub + measuring scoop + 2 x 60 ml tubes of Indurent Gel |
| C400611 TITANIUM | 5 Kg tub + measuring scoop |
| C400727 PLATINUM (85 Shore A) | 450 g tub of Base + 450 g tub of Catalyst |
| C400725 PLATINUM (85 Shore A) | 1 Kg tub of Base + 1 Kg tub of Catalyst |
| C400723 PLATINUM (85 Shore A) | 5 Kg tub of Base + 5 Kg tub of Catalyst |
| C400720 PLATINUM (95 Shore A) | 450 g tub of Base + 450 g tub of Catalyst |
| C400700 PLATINUM (95 Shore A) | 1 Kg tub of Base + 1 Kg tub of Catalyst |
| C400710 PLATINUM (95 Shore A) | 5 Kg tub of Base + 5 Kg tub of Catalyst |
| C401600 ELITE TRANSPARENT | 50 ml cartridge + 6 mixing tips (yellow) |

ZETALABOR - TITANIUM Accessories

| | |
|----------------------|----------------|
| C100700 INDURENT GEL | 1 x 60 ml tube |
|----------------------|----------------|

ELITE TRANSPARENT Accessories

| | |
|----------------------------------|------------------------------|
| C202100 DISPENSER D2 | D2 dispenser - 1:1 |
| C202070 MIXING TIPS SMALL/YELLOW | Mixing tips, yellow (48 pcs) |

BRANCHES

GERMANY

Zhermack GmbH Deutschland
Öhlmühle 10 - D-49448 Marl

T +49 (0) 54 43 / 20 33 - 0
F +49 (0) 54 43 / 20 33 - 11
info@zhermack.de
www.zhermack.de

POLAND

Zhermapol Sp. z o.o.
ul. Augustówka 14
02 - 981 Warszawa - Polska

T +48 22 858 82 72
+48 22 292 71 17
F +48 22 642 07 14
biuro@zhermack.com
www.zhermapol.pl

USA

Zhermack Inc.
P.O. Box 4195, River Edge
New Jersey 07661 - 4195

T +1 (877) 819 6206
+1 (732) 389 8540
F +1 (732) 389 8543
info@zhermackusa.com
www.zhermackusa.com