

Catalogue

EN | Solutions for the dental laboratory



Catalogue **2018**



Zhermack



Zhermack

Progress, constantly. Creating value, to make the quality of the products accessible to the world. With creativity, and especially with the ability to transform every challenge into a development opportunity. To dynamically seize the market trends and understand the needs of partners, clients and customers. To make our solutions accessible worldwide. All this is the basis of Zhermack's growth, and since its foundation, over 35 years ago, the company has never ceased to develop and grow.

The clarity of the dream continues to drive Zhermack along this road, to "make you feel confident in everyday life". This is Zhermack's goal and philosophy of life. And it is a dream that is realised every day. Because everything aims at transmitting confidence. The way is charted with the awareness that Zhermack must contribute to improve oral health throughout the world, now and for future generations.

The contribution of Zhermack to people's oral health stems from the value that is given to the quality of its products. A quality that is born from scientific research and from the commitment to continuous education, to reach and always set new goals that contribute to improve the lives of people all over the world.



«Zhermack is a company that is committed with constancy to creating value, to make the quality of its products accessible worldwide. Zhermack's success resides in its ability to be creative, to transform every challenge into a growth opportunity, and to be dynamic, in order to seize the market trends and understand the needs of partners, clients and end customers».

Paolo Ambrosini
General Manager

Our solutions.

Specific products and solutions for the dental laboratory, conceived exploiting the skills acquired with materials for the dental practice. Starting from development and production of duplication silicones and masks, Zhermack has extended its offer with quality products such as dental stones, resins and investments to satisfy the needs of the numerous laboratory processes involved in the fabrication of fixed and removable prostheses. Not just consumables, but also a range of equipment designed for laboratory use: ovens, innovative welders, sandblasters, steam generators and other appliances to satisfy the principal needs of the laboratory technician. A system to accompany lab technicians in their daily work.

We produce measurable results.

Zhermack directly manages all the working stages - from formulation to packaging, from the production of raw materials to the mixing - to produce all its solutions. Validated and controlled processes are the guarantee with which Zhermack is able to offer products that are constant in their characteristics, as well as certified in quality.

This, together with the technological and process integration adopted over time, is what makes Zhermack one of the major producers in the field of dental products.

Quality, certified. Year after year.

In 1993 Zhermack received the ISO 9001 certification for its Quality Management System. In 2007 it obtained the ISO 22716 for Cosmetics - Good Manufacturing Practices (GMP).

In 2012 the ISO 13485 certification for the Quality Management System of Medical Devices, necessary for the exportation of Zhermack products on the global market.

A system to guarantee Zhermack and its users.





CAD/CAM solutions

Bite registration	12
Stone models	14
Gingival reproduction	15

Model preparation

Stone models	19
Masks	31
Duplication	45
Gingival reproduction	53
Custom impression trays	59

Casting

Investments	65
Sands	71

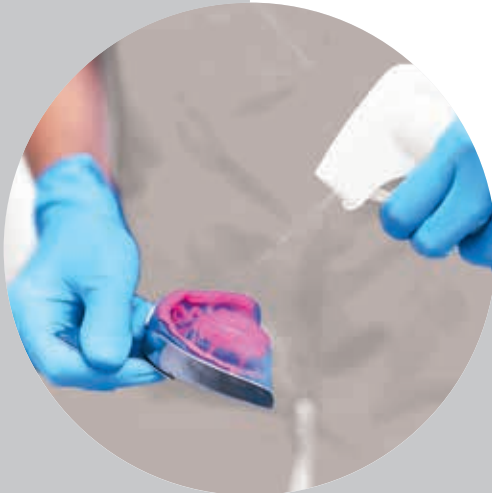
Hygiene

Hygiene lab applications	77
--------------------------	----

Equipment

Model preparation	83
Casting and welding	91
Surface polishing and cleaning	99

NOTE: The images and texts related to the technical data of the individual products and accessories may be changed during the period of validity of the catalogue. The images are only representative of the showed products. Not all products are sold in every country. For further information on product availability, please contact your local representative.



Hygiene

Impressions arriving from the dental practice are often contaminated with saliva and blood. Correct disinfection is vital to protect the health of laboratory technicians. Zhermack **disinfectants** with a **complete spectrum of action** are **enhanced with surfactants to improve the flow of the stone during pouring**.

- Zeta 7 Spray (with surfactants)
- Zeta 7 Solution (without surfactants)



Model preparation

An accurate model is the basis of every well-made prosthesis. Zhermack offers a **complete system** of impression materials, materials for models and equipment, all developed to be used as a system to ensure maximum precision. It also offers a series of scannable products to facilitate the lab technician with **CAD/CAM technology**.

- Platinum
- Zetalabor and Titanium
- Elite Double
- Gingifast
- Elite Dental Stones
- Elite LC Tray
- Elite Mix
- Doublemix
- SQM 25 N



Casting and welding

The prosthodontic market requires ever more speed and precision. Thanks to more than 35 years' experience, Zhermack has developed a combined offer to **optimise time in the laboratory**, without compromising on quality.

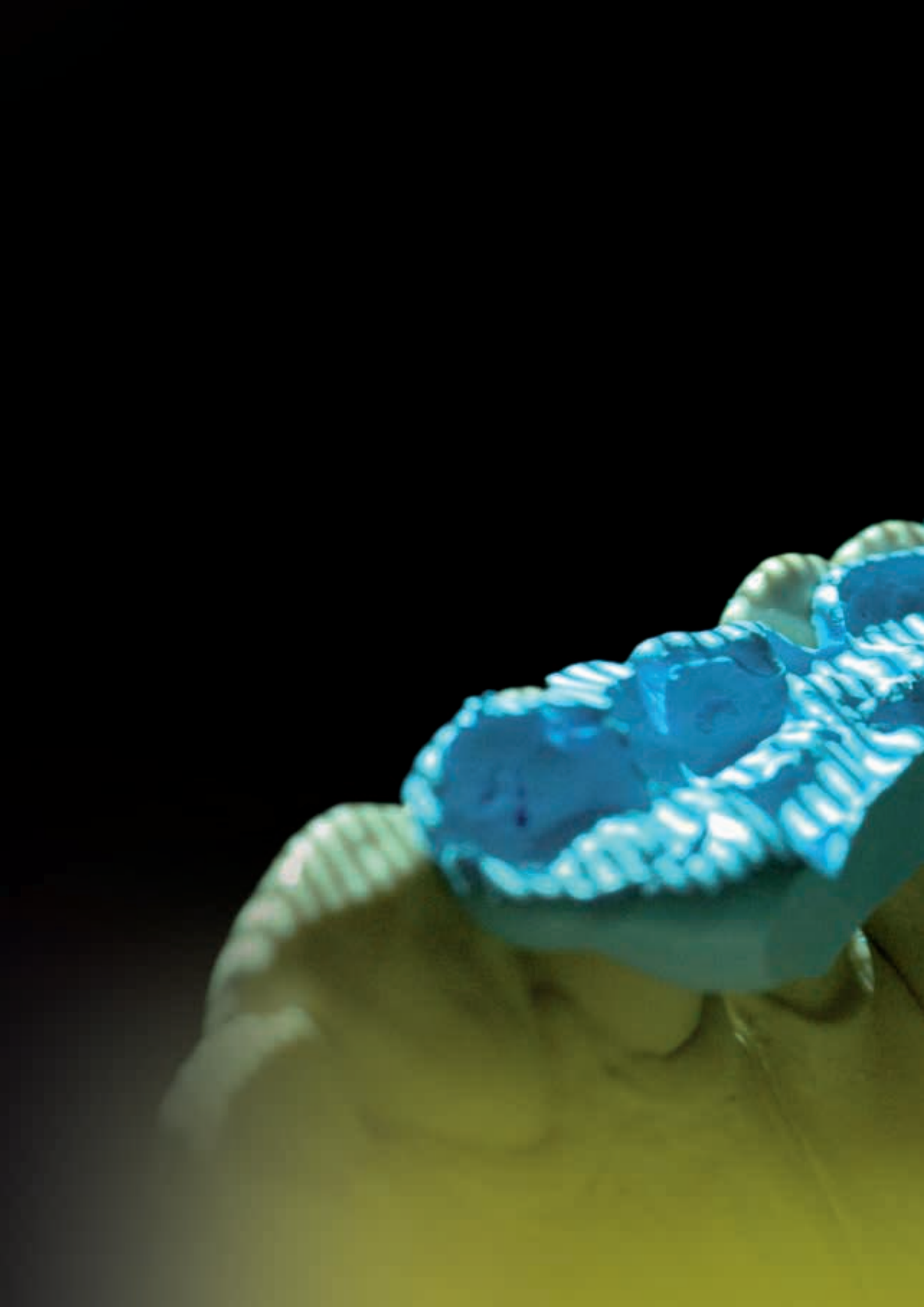
- Elite Vest
- DM
- DE
- Quasar
- Quasar Plus
- Cyclope



Surface polishing and cleaning

Surface cleaning and polishing are simple operations, but fundamental for the quality of the finished prosthesis. Zhermack's experience has enabled to develop a **wide range of products**, adaptable to the main laboratory needs.

- California and Sand S 24 R
- VAP 8A and VAP 8
- VAP 6A and VAP 6
- Water softener AD 8
- Zeta Sonic
- Zeta Sand





CAD/CAM solutions

The CAD/CAM solutions developed by Zhermack combine traditional techniques (impression taking, model preparation, prosthesis) with the most innovative digital techniques.

Saving time in data acquisition, simplifying and improving the quality of CAD/CAM processes.

The Zhermack offer includes a wide range of scannable silicones and stones readable without using reflective sprays.

BITE REGISTRATION

Platinum 75 CAD 12

Occlufast CAD 13

STONE MODELS

Elite Master 14

Elite Rock 14

GINGIVAL REPRODUCTION

Gingifast CAD 15



Platinum 75 CAD is an addition silicone recommended for all CAD/CAM users for making scannable bite registration keys in the articulator.

Characteristics

- Accurate reproduction of details
- 75 Shore A hardness
- Mixing ratio 1:1

Advantages

- Quicker working time to improve efficiency in the laboratory
- Easy to finish, including with bur
- Scannable without using reflective sprays



Platinum 75 CAD



Platinum 75 CAD scan

Mixing time (min:s)	Working time* (min:s)	Setting time* (min:s)	Detail reproduction (µm)	Elastic recovery	Strain in compression	Linear dimensional change (after 24 h)	Hardness (Shore A after 24 h)	Heat resistance
0:30	1:00	7:00	20	> 99.5 %	< 1 %	0.05 %	75	200 °C

*The times mentioned above are intended from the start of the mixing phase at 23 °C (73 °F).

Platinum 75 CAD - A-Silicone for bite registration

Code	Packaging
C400741	800 g (475 ml) Base + 800 g (475 ml) Catalyst

Occlufast CAD

A-Silicone

CAD/CAM solutions / Bite registration

Developed for use in the dental practice, but also excellent for laboratory use, **Occlufast CAD** is an addition silicone for bite registration, scannable without using reflective sprays.

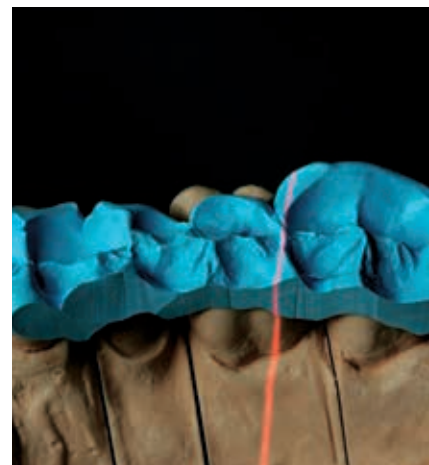
The short working time allows the laboratory work to be optimised.

Characteristics

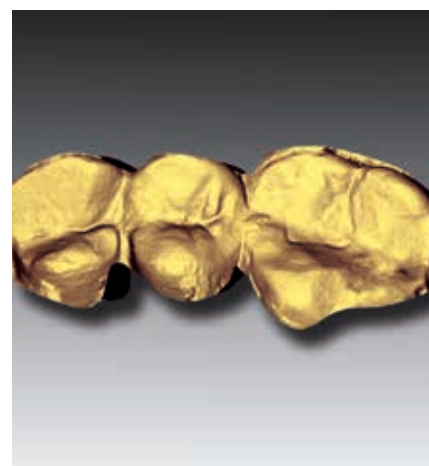
- Accurate reproduction of details
- High hardness: 95 Shore A
- Mixing ratio 1:1
- Setting time 60 seconds*

Advantages

- Short setting time
- Scannable without using reflective sprays
- Easy to finish, including with a bur



Occlufast CAD



Occlufast CAD scan

Mixing ratio Base: Catalyst	Working time** (min:s)	Setting time** (min:s)	Detail reproduction (µm)	Linear dimensional change (after 24 h)	Hardness (Shore A)
1:1	0:30	0:60	20	0.05 %	95

**The times mentioned must be intended at 35 °C - 95 °F.

Occlufast CAD - A-Silicone for bite registration



Code	Packaging
C200800	2 x 50 ml cartridges (Base + Catalyst) + 12 green mixing tips

*Setting time could be longer depending on environmental conditions.



Elite Master and **Elite Rock** are type 4 stones to make scannable master models without using reflective sprays.

Elite Master is reinforced with resin particles, making the material easy to work and resistant to chipping.

Elite Rock is an extra hard stone with high compressive strength, recommended for making master models for fixed prostheses.

Elite Master is scannable in all colours, Elite Rock only in Silver Grey.

Characteristics

Elite Master:

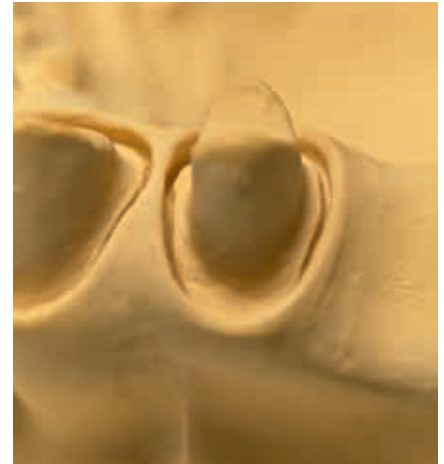
- Scannable without using reflective sprays
- Formaldehyde free
- Resistant to chipping

Elite Rock:

- Also available in fast version to optimise working time
- Low expansion, even after 48 hours
- Accurate reproduction of details

Advantages

- Time savings in data acquisition with optical scanners
- Greater precision compared to use of reflective sprays
- Cleaner environment



Elite Master



Elite Master scan



Product	Water/powder ratio	Mixing time (manual) (min:s)	Mixing time (vacuum) (min:s)	Working time (min:s)	Setting time (VICAT) (min:s)	Removal time (min:s)	Setting expansion 2 h	Setting expansion 48 h	Compressive strength 1 h	Compressive strength 48 h
Elite Master	21 ml / 100 g	0:60	0:30	12:00	14:00	45:00	0.08 %	0.19 %	50 MPa (510 kg / cm ²)	75 MPa (756 kg / cm ²)
Elite Rock	20 ml / 100 g	0:60	0:30	12:00	14:00	45:00	0.08 %	0.19 %	52 MPa (530 kg / cm ²)	81 MPa (826 kg / cm ²)
Elite Rock Fast	20 ml / 100 g	0:60	0:30	5:00	9:00	25:00	0.08 %	0.19 %	52 MPa (530 kg / cm ²)	81 MPa (826 kg / cm ²)

More details on page 22



Gingifast CAD is a scannable fluid addition silicone, suitable for reproducing gingival morphology on models.

The elastic version with high tear resistance is recommended in the presence of undercuts or very thin thicknesses.

The rigid version is ideal for implant prosthesis applications.

Characteristic

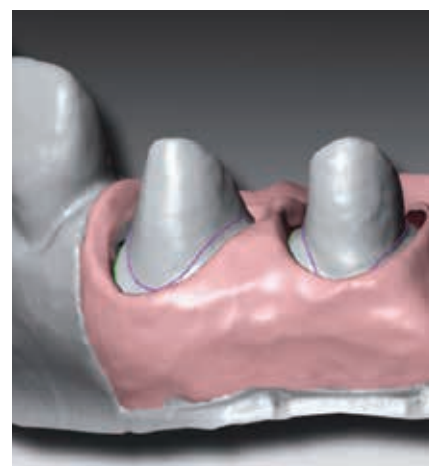
- Two hardness versions: Elastic 40 Shore A, Rigid 70 Shore A
- Rapid working times
- Mixing ratio 1:1

Advantages

- Time savings in data acquisition with CAD/CAM
- Greater precision compared to use of reflective sprays
- Compatible with both direct and indirect techniques
- Reduction of waste, thanks to the smaller tips



Gingifast CAD Elastic and Rigid



Gingifast CAD Elastic scan



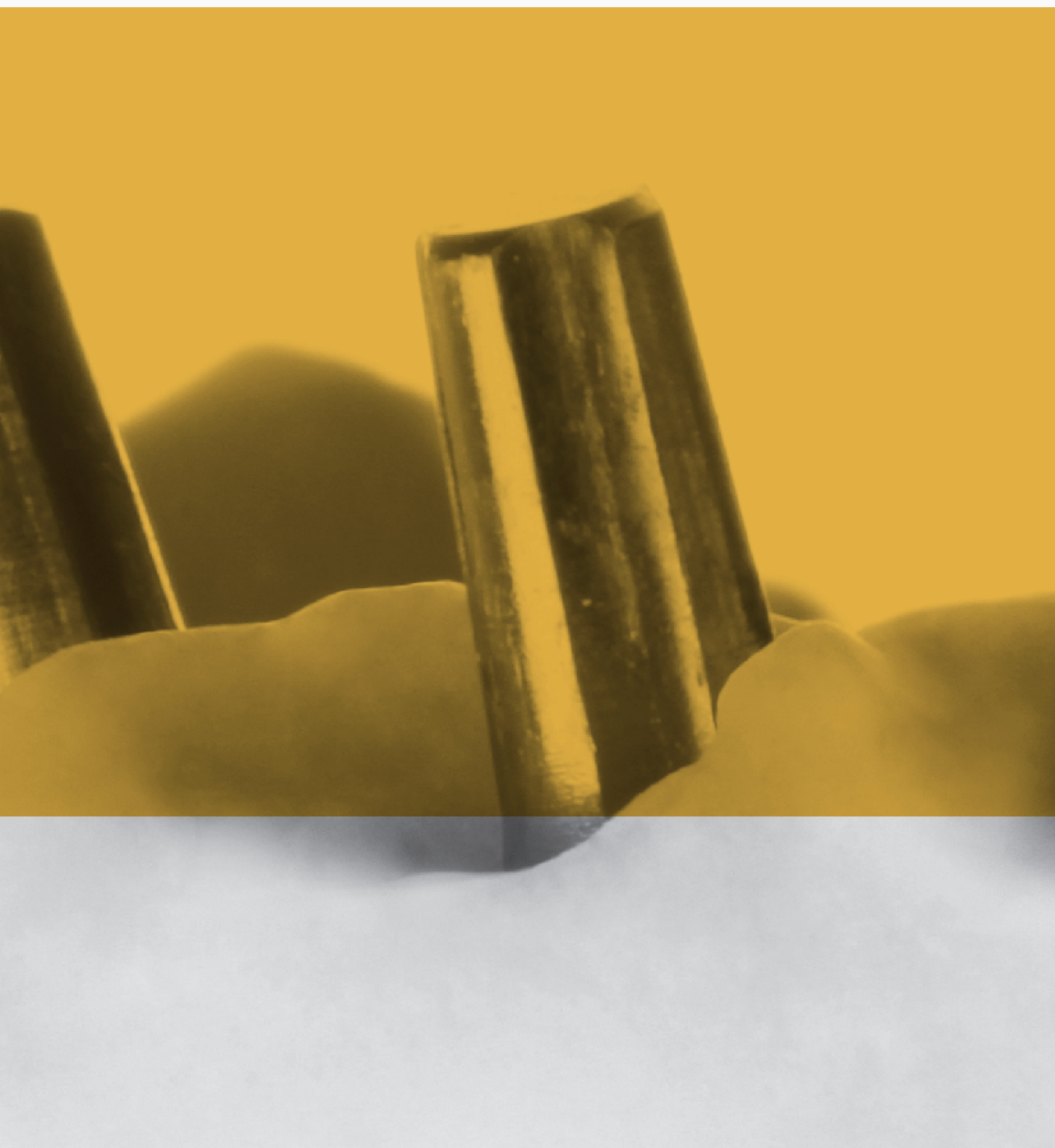
Product	Mixing ratio	Working time* (min:s)	Setting time* (min:s)	Hardness (Shore A)
Gingifast Elastic	1:1	2:00	10:00	40
Gingifats Rigid	1:1	2:00	10:00	70

*The times mentioned above are intended from the start of the mixing phase at 23 °C (73 °F).

Gingifast CAD - A-Silicones for gingival reproduction

Code	Product	Packaging
C203227	Gingifast CAD Elastic	2 x 50 cartridges + 12 blue mixing tips + 10 ml bottle Separator
C203232	Gingifast CAD Rigid	2 x 50 cartridges + 12 blue mixing tips + 10 ml bottle Separator







Model preparation

An accurate model is the basis of every well-made prosthesis. Possible errors during this phase have repercussions on subsequent phases and are extremely difficult to eliminate.

Sensitive to the needs of lab technicians, Zhermack has designed a system of laboratory and impression materials able to work in synergy to obtain accurate models.





Model preparation

Stone models

The choice of material to develop the model contributes to the success of the prosthesis. The types 3 and 4 stones in the Elite range are formulated, developed and produced in-house by Zhermack which controls the various phases of the production process to offer high quality constant standards.

Available in a wide range of colours and different packs, Zhermack stones can meet the main diverse needs of the laboratory.

They are compatible with the most commonly used impression materials present on the market (including polyethers and hydrocolloids) and are formulated to deliver the best performance when used in combination with Zhermack materials.

MASTER MODEL AND BASES

Elite Master	22
Elite Rock	22
Elite Rock Fast	22
Elite Base	22
Elite Stone	22

ANTAGONIST MODEL

Elite Model	24
Elite Model Fast	24

ARTICULATOR

Elite Arti	26
Elite Arti Fast	26

ORTHODONTIC MODEL

Elite Ortho	27
--------------------------	----

Dental stones classification

The international regulation 6873:2013 classifies dental stones in different types, based on their linear setting expansion and compressive strength.

Higher type does not always mean higher quality for a stone. Type 5 stones, for example, are characterized by a high compressive strength but have also a high expansion, thus they are suitable for specific applications only.

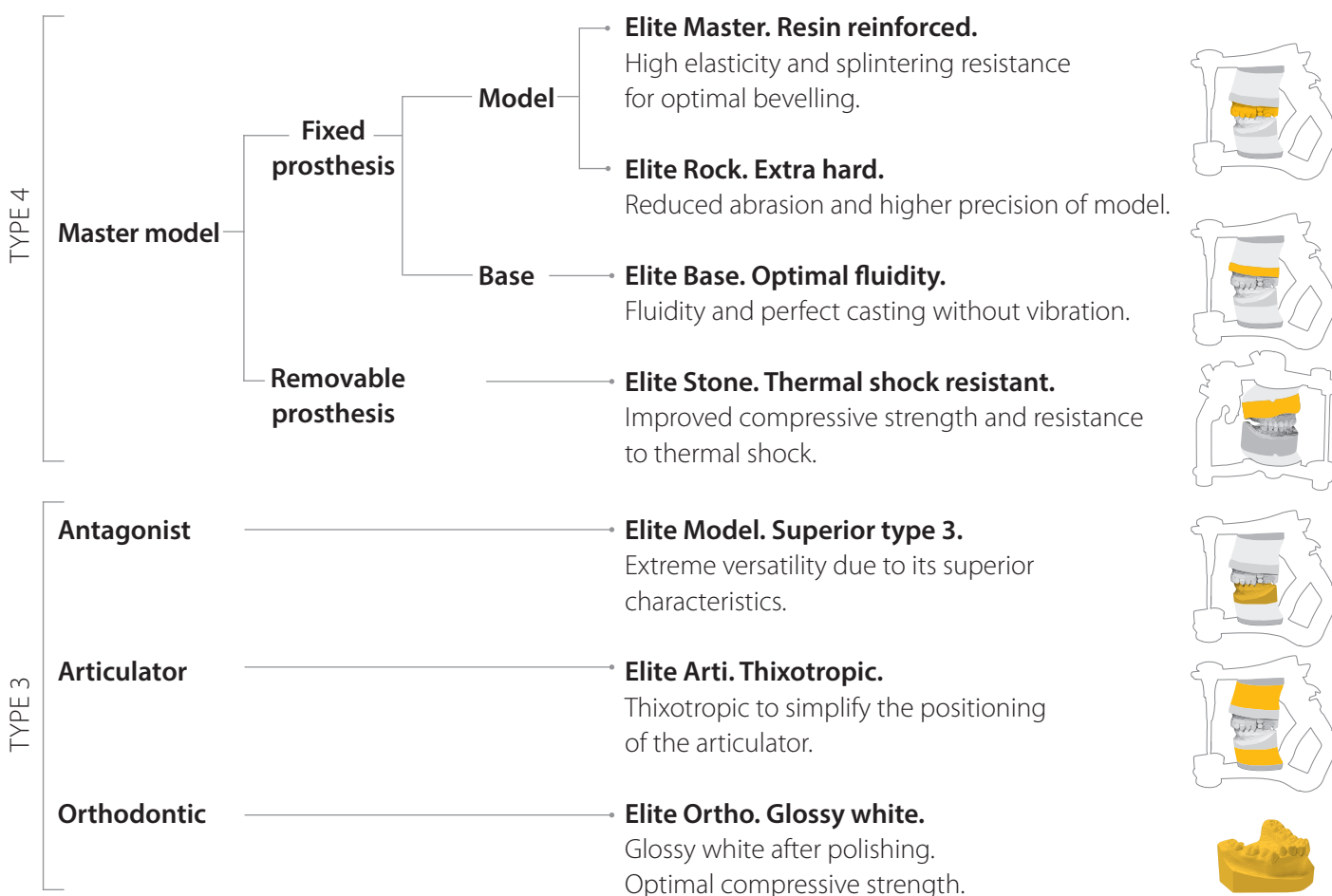
Type 3 and 4 stones are instead the best for the dental use, because characterized by high compressive strength and low expansion that allow a higher dimensional stability over time and therefore precision in the reproduction of detail.

Type	Linear setting expansion %				Compressive strength MPa	
	2 h		24 h		1 h	
	min.	max.	min.	max.	min.	max.
1	0.00	0.15	-	-	4.0	8.0
2 (Class 1)*	0.00	0.05	-	-	9.0	-
2 (Class 2)**	0.06	0.30	-	-	9.0	-
3	0.00	0.20	-	-	20.0	-
4	0.00	0.15	0.00	0.18	35.0	-
5	0.16	0.30	-	-	35.0	-

*dental plaster for mounting

**dental plaster for models

Zhermack dental stones



A stone for every application

For fixed prostheses

Stone for bases | Elite Base

- Optimised to be used in combination with master model → same expansion (type 4)
- Easy to cast → fluid

Stone for master model | Elite Rock or Elite Master

- Accurate reproduction of details → low expansion
- Chamfering without splintering → resin particles
- Hard stone → compressive strength

Stone for antagonist | Elite Model

- Cheaper than master model → type 3
- Hard stone → compressive strength

Stone for articulator | Elite Arti

- Maintain correct occlusion → low expansion
- Simplifying positioning in the articulator → thixotropic
- Perfect fixing with antagonist → adhesion



For removable prostheses

Stone for articulator | Elite Arti

- Maintain correct occlusion → low expansion
- Simplify positioning in the articulator → thixotropic
- Perfect fixing with antagonist → adhesion

Stone for master model | Elite Stone

- To be used at high temperature → resistant to thermal shocks
- To be used with frameworks → wear resistance



Elite Master | Elite Rock | Elite Base | Elite Stone

Type 4 stones for master models and bases

Model preparation / Stone models

Type 4 stones have high compressive strength and low expansion, ideal for making master models. Each stone developed by Zhermack has specific technical characteristics for each individual application.

Elite Master is the stone for master models in fixed prosthesis applications with resin particles, for chamfering without splintering.

Elite Rock is an extra hard stone for master models in fixed prosthesis applications.

Elite Base has excellent fluidity for preparation of bases, including without vibrator.

Elite Stone is a stone specifically conceived for master models in removable prostheses, resistant to thermal shock and abrasion from frameworks.

Thanks to its special formula optimised for reading with CAD/CAM systems, models made with Elite Master (in all colours) and Elite Rock (Silver Grey) are scannable without using reflective sprays.

Characteristics

- Low expansion, even after 48 hours
- Accurate reproduction of detail
- "Fast" version to save time (Elite Rock)

Elite Master:

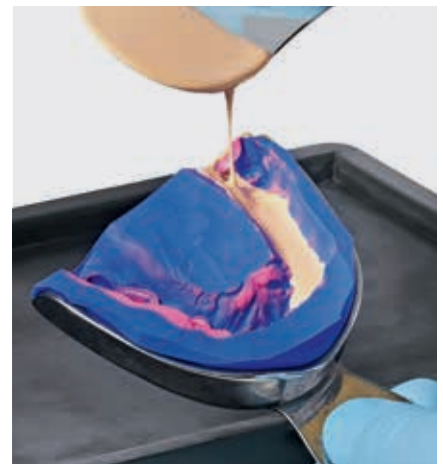
- Formaldehyde free
- Resistant to chipping

Advantages

- Elite Master: chamfering without splintering, thanks to the high resistance given by the resin particles incorporated in the stone
- Thixotropic to simplify fabrication of the model
- Elite Base: high fluidity, even without vibration



Elite Master



Elite Rock



Elite Base



MASTER MODEL

FIXED PROSTHESIS		REMOVABLE PROSTHESIS
MODEL		<div>Elite Stone Thermal shock resistant Reduced abrasion and resistance to thermal shock</div>
<div>Elite Master Resin reinforced Chipping resistance for optimal chamfering</div>	<div>Elite Rock Extra hard Improved compressive strenght and higher precision of model</div>	
BASE		
<div>Elite Base Optimal Fluidity Fluidity and perfect preparation without vibration</div>		

	Elite Master	Elite Rock	Elite Rock Fast	Elite Base	Elite Stone
Scannable	All	Silver Grey	Silver Grey	-	-
Application	Master model (fixed, dies)	Master model (fixed)	Master model (fixed)	Bases for model	Master model (removable)
Color	Desert Sand, Sandy Brown, Soft Grey	Sandy Brown, Cream, White, Light Amber, Silver Grey	Sandy Brown, Cream, Silver Grey	Terracotta Red, Royal Blue, Grey	Aqua Green, Pink, Navy Blue, Brown
Type	4	4	4	4	4
Main feature	Resin reinforced	Extra hard	Extra hard	Optimal fluidity	Thermal shock resistant
Water / Powder	21 ml / 100 g	20 ml / 100 g	20 ml / 100 g	23 ml / 100 g	25 ml / 100 g
Mixing time (m)*	0:60	0:60	0:60	0:60	0:60
Mixing time (v)**	0:30	0:30	0:30	0:30	0:30
Working time	12:00	12:00	5:00	5:00	8:00
Setting time***	14:00	14:00	9:00	18:00	14:00
Removal time	45:00	45:00	25:00	45:00	45:00
Expansion after 2 h	0.08 %	0.08 %	0.08 %	0.05 %	0.08 %
Expansion after 48 h	0.19 %	0.19 %	0.19 %	0.10 %	0.09 %
Compressive strength 1 h	50 MPa (510 kg / cm ²)	52 MPa (530 kg / cm ²)	52 MPa (530 kg / cm ²)	40 MPa (408 kg / cm ²)	42 MPa (428 kg / cm ²)
Compressive strength 48 h	75 MPa (765 kg / cm ²)	81 MPa (826 kg / cm ²)	81 MPa (826 kg / cm ²)	83 MPa (846 kg / cm ²)	60 MPa (612 kg / cm ²)

* manual | ** vacuum, 240 rpm | *** Vicat

Elite Model | Elite Model Fast

Type 3 stones for antagonists

Model preparation / Stone models

Elite Model is a high quality type 3 stone indicated for making antagonists and filling flasks in removable prosthesis applications with heat-curing resins.

Characteristics

- Low expansion
- High mechanical characteristics
- Universal use

Advantages

- Model fabrication facilitated by the high thixotropy
- Extreme versatility due to its superior characteristics compared to other stones of the same type



Elite Model



Elite Model Fast

	Elite Model	Elite Model Fast
Application	Antagonist	Antagonist
Color	Ivory, Steel Blue, White	Light Cream, Sky Blue, White
Type	3	3
Main feature	Thixotropic	Thixotropic
Water / Powder	30 ml / 100 g	30 ml / 100 g
Mixing time (m)*	0:60	0:60
Mixing time (v)**	0:30	0:30
Working time	7:00	4:00
Setting time***	12:00	8:00
Removal time	45:00	15:00
Expansion after 2 h	0.04 %	0.10 %
Expansion after 48 h	0.07 %	0.10 %
Compressive strength 1 h	31 MPa (316 kg / cm ²)	36 MPa (366 kg / cm ²)
Compressive strength 48 h	62 MPa (632 kg / cm ²)	65 MPa (662 kg / cm ²)

* manual | ** vacuum, 240 rpm | *** Vicat



Elite Arti | Elite Arti Fast

Types 3 stones for articulators

Model preparation / Stone models

Elite Arti is a type 3 stone with low expansion to keep the occlusion unaltered in the articulator.

Characteristics

- Thixotropic
- Minimal expansion
- Also available in fast version
- White colour

Advantages

- Minimal expansion to keep the occlusion unaltered
- Thixotropic to simplify positioning in the articulator



Elite Arti



Elite Arti

	Elite Arti	Elite Arti Fast
Application	Mounting model for articulator	Mounting model for articulator
Color	White	White
Type	3	3
Main feature	Thixotropic	Thixotropic
Water / Powder	30 ml / 100 g	30 ml / 100 g
Mixing time (m)*	0:60	0:45
Working time	5:00	2:00
Setting time**	5:00	3:00
Expansion after 2 h	0.02 %	0.02 %
Expansion after 48 h	0.06 %	0.06 %
Compressive strength 1 h	26 MPa (265 kg / cm ²)	26 MPa (265 kg / cm ²)
Compressive strength 48 h	59 MPa (602 kg / cm ²)	59 MPa (602 kg / cm ²)

* manual | ** Vicat



Elite Ortho is a specific stone for orthodontic models, glossy white.

Characteristics

- Glossy white
- Thixotropic
- Low expansion

Advantages

- Specific for orthodontic models
- Adapt for study models



Elite Ortho

	Elite Ortho
Application	Orthodontic model
Color	White
Type	3
Main feature	Glossy white
Water / Powder	24 ml / 100 g
Mixing time (m)*	0:60
Mixing time (v)**	0:30
Working time	7:00
Setting time***	14:00
Removal time	45:00
Expansion after 2 h	0.04 %
Expansion after 48 h	0.05 %
Compressive strength 1 h	32 MPa (326 kg / cm ²)
Compressive strength 48 h	60 MPa (612 kg / cm ²)

* manual | ** vacuum, 240 rpm | *** Vicat



Elite Ortho

Elite Dental Stones

Codes

Model preparation / Stone models



	200 g	1 kg	3 kg	25 kg carton	25 kg drum
Elite Master					
Desert Sand	C410400	C410401	C410402	C410403	C410404
Sandy Brown	-	-	C410410	C410411	C410412
Soft Grey	-	-	C410406	-	-
Elite Rock					
Sandy Brown	C410033	C410032	C410030	C410200	C410334
Cream	-	-	C410020	C410201	C410332
Silver Grey	-	-	C410010	C410202	C410330
Light Amber	-	-	C410035	-	C410335
White	-	-	C410000	C410204	C410336
Elite Rock Fast					
Sandy Brown	C410152	C410151	C410150	C410205	C410337
Cream	-	-	C410160	C410207	C410339
Silver Grey	-	-	C410155	C410206	C410338
Elite Base					
Terracotta Red	-	-	C410448	C410446	C410447
Royal Blue	-	-	C410437	C410435	C410436
Grey	-	-	C410440	-	C410439
Elite Stone					
Pink	-	-	C410048	C410214	C410315
Navy Blue	-	-	C410050	-	C410310
Brown	-	-	C410040	C410211	C410312
Aqua Green	-	-	C410043	-	C410313
Elite Model					
Steel Blue	-	C410071	C410070	C410221	C410302
Ivory	-	C410081	C410080	C410220	C410304
White	-	-	C410060	C410222	C410300
Elite Model Fast					
Sky Blue	-	-	C410065	C410224	C410306
Light Cream	C410069	-	C410067	C410226	C410308
White	-	C410064	C410063	C410228	C410309
Elite Arti					
White	-	-	C410100	C410240	C410350
Elite Arti Fast					
White	C410107	-	C410105	C410241	C410351
Elite Ortho					
White	C410092	C410091	C410090	C410230	C410320



Cod. C300992



Rubber mixing bowl

Cod. C300991



Green spatula (x1)

Cod. XR0250840



Water bottle with graduated measuring cup

Cod. C400441



Gypstray container 3 l



Model preparation

Masks

Zhermack products for the dental laboratory include a wide range of top quality silicones to simplify work and reduce the possibility of error.

We directly manage all phases of production to guarantee constant reliable quality.

A-SILICONES

Elite Transparent 32

Platinum 75 CAD 36

Platinum 85 TOUCH 36

Platinum 85 36

Platinum 95 36

C-SILICONES

Zetalabor 40

Titanium 40

Elite Transparent

A-Silicone

Model preparation / Masks

Elite Transparent is a transparent fluid two-component addition silicone.

Formulated for making transparent silicone masks in the laboratory for composites and light-curing resins.

Characteristics

- Highly transparent
- Low viscosity
- High final hardness 72 Shore A

Advantages

- Shorter working times
- Composites or resins act on more compact surfaces without dispersion layer, thanks to the light curing in an oxygen free atmosphere
- Easy and quick to apply
- Possibility to retain the mask for future use



Elite Transparent



Elite Transparent result

Working time* (min:s)	Setting time* (min:s)	Linear dimensional change (after 24 h)	Hardness (Shore A after 1 h)	Tensile strength	Tear strength
1:30	15:00	0.18 %	72	6.5 N/mm ²	4 N/mm

*The times mentioned above are intended from the start of the mixing phase at 23 °C (73 °F).



Elite Transparent - A-Silicone for masks

Code	Packaging
C401600	1 x 50 ml cartridge + 6 yellow mixing tips



Guide to use

A-Silicones vs C-Silicones

Model preparation / Masks

Addition silicones

- Excellent dimensional stability
- Resistant to heat up to 200°C
- Excellent surface definition



Platinum 75 CAD
Platinum 85 TOUCH
Platinum 85
Platinum 95

Indicated for lengthy processes (e.g. work on implants with diagnostic wax-up), processes requiring high definition and detail reproduction (e.g. veneers), use with thermoplastic materials with a high curing temperature, heat-cured resins and self-curing resins.

Condensation silicones

- Lower dimensional stability
- Resistant to heat up to 100°C
- Lower surface quality



Zetalabor (85 Shore A)
Titanium (95 Shore A)

Indicated for short processes and use with heat-curing and self-curing resins.

Examples of application

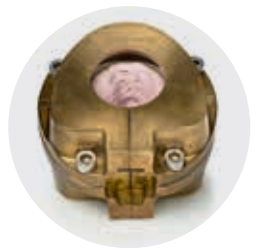
Removable prosthesis
with self-curing resin



Removable prosthesis
prosthesis repair



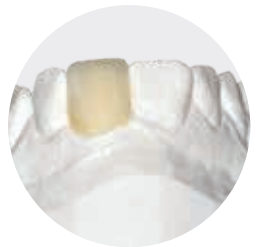
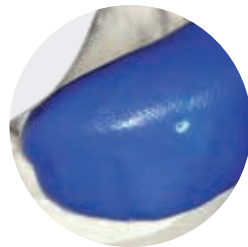
Removable prosthesis
complete denture with
hot curing resin



Removable prosthesis
complete denture with
self-curing resin



Fixed prosthesis
silicone masks for composite
temporary crown



Fixed prosthesis
artificial gum with
indirect technique



Platinum is a high precision addition silicone available in 95, 85, 85 TOUCH or 75 CAD versions. All silicones in the line are characterised by excellent dimensional stability, short working times and ease of use.

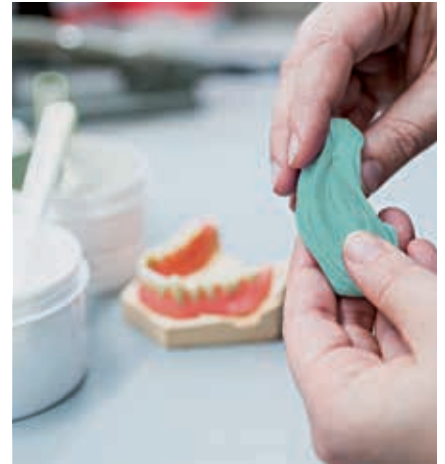
Zhermack offers a complete system of putty silicones with different hardnesses, delivering high performance in numerous applications, including dental aesthetics. To satisfy the various needs of daily practice, Platinum 75 CAD silicone is designed for scanning with CAD/CAM systems and is ideal in combination with Platinum 95 for excellent reproduction of details. Recommended to make masks and counter-moulds.

Characteristics

- Availability in a wide range of hardnesses
- Accurate reproduction of details
- Resistant to heat up to 200°C
- Mixing ratio 1:1

Advantages

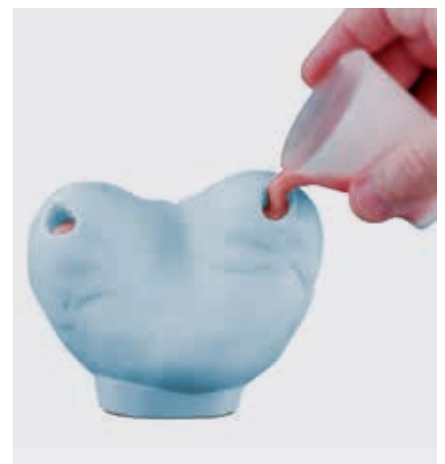
- Can be used for long processes (for example, implants with diagnostic wax-up) without altering the dimensional references
- Can be used with thermoplastic materials, thanks to heat resistance of up to 200°C
- Easy to work, including with a bur



Platinum 85



Platinum 85 TOUCH



Platinum 95



Product	Counter-mould for removable prosthesis in thermoplastic materials	Counter-mould for removable prosthesis in heat-curing resins	Masks for prosthesis in self-curing resins	Use with verticulator	Masks for gingival reproduction in indirect technique	Masks for composite and polyglass composite provisional	Removable prosthesis repair	Occlusal key on articulator
Platinum 75 CAD*					○	○		●
Platinum 85 TOUCH		○	○		○	●	○	
Platinum 85	●	●	●	●	●	○	○	○
Platinum 95	○	○		●		○	○	●

● highly recommended ○ recommended

*scannable without using reflective sprays

Product	Mixing time (min:s)	Working time* (min:s)	Setting time* (min:s)	Detail reproduction (μm)	Elastic recovery	Strain in compression	Linear dimensional change (after 24 h)	Hardness (Shore A after 24 h)	Heat resistance
Platinum 75 CAD	0:30	1:00	7:00	20	> 99.5 %	< 1 %	0.05 %	75	200 °C
Platinum 85 TOUCH	0:30	1:00	7:00	20	> 99.5 %	< 1 %	0.05 %	85	200 °C
Platinum 85	0:30	2:00	8:00	20	> 99.5 %	< 1 %	0.05 %	85	200 °C
Platinum 95	0:30	2:00	8:00	20	> 99.5 %	< 1 %	0.05 %	95	200 °C

*The times mentioned above are intended from the start of the mixing phase at 23°C (73°F).



Platinum 75 CAD - Scannable A-Silicone

Code	Packaging
C400741	1 tub 800 g Base + 1 tub 800 g Catalyst



Platinum 85 TOUCH - High precision A-Silicone

Code	Packaging
C400750	1 tub 4.3 kg Base + 1 tub 4.3 kg Catalyst
C400751	1 tub 200 g Base + 1 tub 200 g Catalyst



Platinum 85 - High precision A-Silicone

Code	Packaging
C400727	1 tub 450 g Base + 1 tub 450 g Catalyst
C400725	1 tub 1 kg Base + 1 tub 1 kg Catalyst
C400723	1 tub 5 kg Base + 1 tub 5 kg Catalyst



Platinum 95 - High precision A-Silicone

Code	Packaging
C400720	1 tub 450 g Base + 1 tub 450 g Catalyst
C400700	1 tub 1 kg Base + 1 tub 1 kg Catalyst
C400710	1 tub 5 kg Base + 1 tub 5 kg Catalyst



Designed for the dental laboratory, **Zetalabor** and **Titanium** condensation silicones are characterised by high hardness and good mechanical properties.

They can be used in various applications requiring short times and not excessively high working temperatures. Zetalabor and Titanium are recommended for counter-moulds in removable prosthesis applications, masks for creating artificial gums using the indirect technique, moulds for preparation self-curing resins and numerous other applications. For more than 35 years, their ease of use has helped speed up laboratory procedures and improve the everyday performance of lab technicians.

Indurent Gel is the gel catalyst completing the range. Its characteristic red colour makes it easy to recognise when the mixture is homogeneous. Easy to measure, it can be used with all Zhermack condensation silicones.

Characteristics

- Resistant to heat up to 100°C
- Good precision
- Silicones to mix with the gel catalyst only

Advantages

- Time saving
- Excellent quality/price ratio
- For use with hot and cold resin techniques



Zetalabor



Zetalabor



Zetalabor



Product	Counter-mould for removable prosthesis in heat-curing resins	Masks for prosthesis in self-curing resins	Masks for gingival reproduction in indirect technique	Masks for composite and polyglass composite provisional	Removable prosthesis repair	Occlusal key for mounting on articulator
Zetalabor	●	●	●	○	●	
Titanium	●	○			○	○

● highly recommended ○ recommended

Product	Mixing time (min:s)	Working time* (min:s)	Setting time* (min:s)	Detail reproduction (μm)	Elastic recovery	Strain in compression	Linear dimensional change (after 24 h)	Hardness (Shore A after 24 h)
Zetalabor	0:30	2:00	6:00	20	99 %	< 1 %	0.10 %	80
Titanium	0:30	2:00	6:00	20	99 %	< 1 %	0.10 %	90

*The times mentioned above are intended from the start of the mixing phase at 23 °C (73 °F).



Zetalabor - C-Silicone rigid

Code	Packaging
C400791	1 tub 900 g
C400790	1 tub 2.6 kg
C400811	1 tub 5 kg
C400804	1 tub 10 kg
C400812	1 tub 25 kg
C400798	1 tub 5 kg + 2 Indurent Gel 60 ml



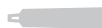
Titanium - Lab putty C-Silicone extra-rigid

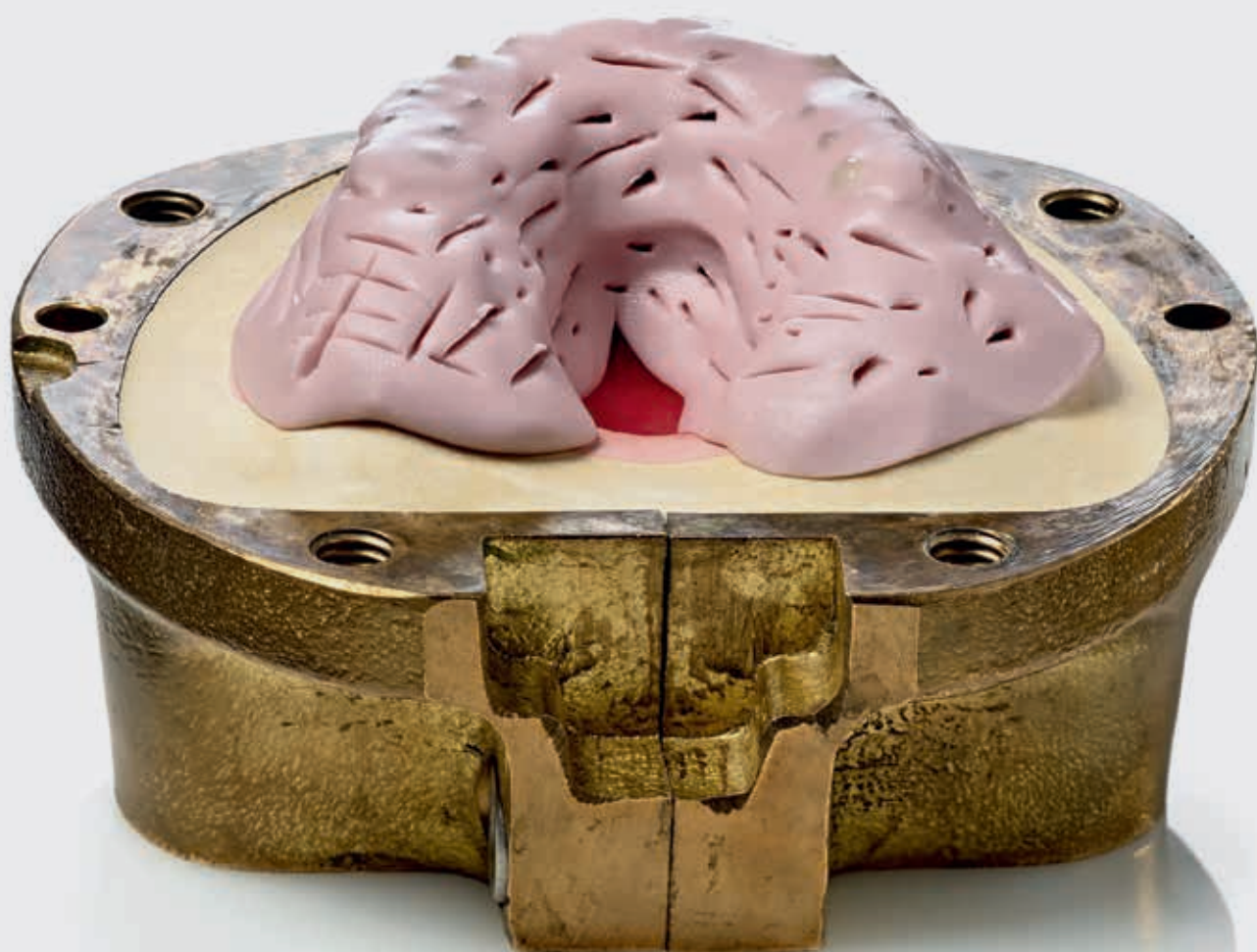
Code	Packaging
C400605	1 tub da 2.6 kg
C400611	1 tub 5 kg
C400818	1 tub 5 kg + 2 Indurent Gel 60 ml



Indurent Gel - Gel catalyst for C-Silicones

Code	Packaging
C100700	1 tub 60 ml







Model preparation

Duplication

Interpreting the needs of lab technicians, Zhermack R&D laboratories have developed Elite Double, a wide range of duplication silicones characterised by accurate reproduction of details and excellent dimensional stability.

The high elasticity and high resistance to tearing make removal of the model from the silicone easy and safe.

For excellent results even in the most complex situations.

A-SILICONES

Elite Double 8	46
Elite Double 16 Fast	46
Elite Double 16 Extra Fast ..	46
Elite Double 22	46
Elite Double 22 Fast	46
Elite Double 22 Extra Fast ..	46
Elite Double 32	46
Elite Double 32 Fast	46

Elite Double

A-Silicones

Model preparation / Duplication

The **Elite Double** line includes a wide range of duplication silicones. Designed to meet the lab technician's different needs in both fixed and removable prosthesis applications. The range consists of 8 products.

Elite Double has different colours, four different final hardnesses and three setting times: normal, fast and extra fast, the latter formulated specifically for automatic mixers. Elite Double retains high and constant fluidity throughout the working time, delivering a homogeneous bubble-free result.

Characteristics

- Resistance to stretching and tearing, including with thin thicknesses
- Accurate reproduction of detail
- High fluidity
- High dimensional stability over time
- High elastic recovery

Advantages

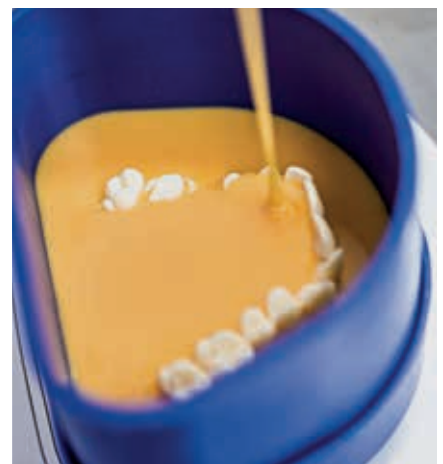
- Optimisation of working times, particularly when compared with duplication with hydrocolloids (setting time 5:00, 10:00, 20:00)
- The model can be duplicated a number of times, thanks to the dimensional stability over time and high elastic recovery
- Compatible with stones, polyurethane resins, acrylic resins and phosphate and alcohol-based investments
- High fluidity: does not require mixing in a vacuum



Elite Double 8



Elite Double 22 Fast



Elite Double 22 Fast



Product	Duplication of cores, integral ceramic coating	Duplication of models, generally in gypsum and/or resin	Duplication of models, controlled expansion coating	Duplication of models, free expansion coating
Elite Double 8	●			
Elite Double 16 Fast	●	●	●	
Elite Double 16 Extra Fast	●	●	●	
Elite Double 22		●	●	
Elite Double 22 Fast		●	●	
Elite Double 22 Extra Fast		●	●	
Elite Double 32		●		●
Elite Double 32 Fast		●		●

Product	Mixing ratio	Manual mixing time* (min:s)	Mechanical mixing time with vacuum mixer* (min:s)	Working time* (min:s)	Setting time* (min:s)	Detail reproduction (μm)	Elastic recovery	Linear dimensional change (after 24 h)	Hardness (Shore A)	Load at break	Elongation at break	Tear resistance
Elite Double 8	1:1	1:00	0:30	10:00	20:00	2	99.95 %	0.05 %	8	2 N/mm ²	380 %	2.5 N/mm ²
Elite Double 16 Fast	1:1	1:00	0:30	5:00	10:00	2	99.95 %	0.05 %	16	2.5 N/mm ²	550 %	5 N/mm ²
Elite Double 16 Extra Fast	1:1	Automatic mixer	Automatic mixer	1:30	5:00	2	99.95 %	0.05 %	16	2.5 N/mm ²	550 %	5 N/mm ²
Elite Double 22	1:1	1:00	0:30	10:00	20:00	2	99.95 %	0.05 %	22	2.5 N/mm ²	450 %	5 N/mm ²
Elite Double 22 Fast	1:1	1:00	0:30	5:00	10:00	2	99.95 %	0.05 %	22	2.5 N/mm ²	450 %	5 N/mm ²
Elite Double 22 Extra Fast	1:1	Automatic mixer	Automatic mixer	1:30	5:00	2	99.95 %	0.05 %	22	2.5 N/mm ²	450 %	5 N/mm ²
Elite Double 32	1:1	1:00	0:30	10:00	20:00	2	99.95 %	0.05 %	32	2.5 N/mm ²	350 %	5 N/mm ²
Elite Double 32 Fast	1:1	1:00	0:30	5:00	10:00	2	99.95 %	0.05 %	32	2.5 N/mm ²	350 %	5 N/mm ²

*The times mentioned above are intended from the start of the mixing phase at 23 °C (73 °F).

Elite Double

Codes

Model preparation / Duplication



Elite Double 8 - A-Silicone for model duplication

Code	Packaging
C400820	250 g (Base) + 250 g (Catalyst)
C400830	1 kg (Base) + 1 kg (Catalyst)
C400850	5 kg (Base) + 5 kg (Catalyst)



Elite Double 16 Fast - A-Silicone for model duplication

Code	Packaging
C400825	250 g (Base) + 250 g (Catalyst)
C400831	1 kg (Base) + 1 kg (Catalyst)
C400847	5 kg (Base) + 5 kg (Catalyst)



Elite Double 16 Extra Fast - A-Silicone for model duplication

Code	Packaging
C400848	5 kg (Base) + 5 kg (Catalyst)



Elite Double 22 - A-Silicone for model duplication

Code	Packaging
C400821	250 g (Base) + 250 g (Catalyst)
C400832	1 kg (Base) + 1 kg (Catalyst)
C400840	5 kg (Base) + 5 kg (Catalyst)





Elite Double 22 Fast - A-Silicone for model duplication

Code	Packaging
C400823	250 g (Base) + 250 g (Catalyst)
C400834	1 kg (Base) + 1 kg (Catalyst)
C400842	5 kg (Base) + 5 kg (Catalyst)



Elite Double 22 Extra Fast - A-Silicone for model duplication

Code	Packaging
C400838	1 kg (Base) + 1 kg (Catalyst)
C400849	5 kg (Base) + 5 kg (Catalyst)



Elite Double 32 - A-Silicone for model duplication

Code	Packaging
C400833	1 kg (Base) + 1 kg (Catalyst)
C400841	5 kg (Base) + 5 kg (Catalyst)



Elite Double 32 Fast - A-Silicone for model duplication

Code	Packaging
C400836	1 kg (Base) + 1 kg (Catalyst)
C400843	5 kg (Base) + 5 kg (Catalyst)



Doublemix: automatic mixer for fluid duplication A-Silicones.
More information on page 86

Elite Double

Accessories

Model preparation / Duplication





Cod. C207200



Spatula for silicones

Cod. C400530



Tensilab - alcohol based surface-active
spray solution - 120 ml with spray bottle





Model preparation

Gingival reproduction

To reproduce artificial gingiva on a model, Zhermack offers top quality, precise polyvinylsiloxane products with long stability to facilitate work in the laboratory.

They retain their characteristics unaltered throughout all phases of the process, giving the lab technician more peace of mind.

A-SILICONES

Gingifast Elastic	54
Gingifast Rigid	54
Gingifast CAD Elastic	54
Gingifast CAD Rigid	54

Gingifast addition silicones are conceived to reproduce gingival morphology on models in fixed prosthesis and implant applications. Zhermack proposes the most suitable gum mask for all types of application.

Gingifast Elastic guarantees excellent aesthetic results, thanks to its translucence and the presence of fibrils to give a natural effect. Particularly suitable in the presence of undercuts and thin thicknesses.

Gingifast Rigid is indicated for the direct technique. Thanks to its balanced hardness, it can be worked easily with burs and is the top product in the field of implant prosthetics.

Gingifast CAD, a scannable fluid silicone available in two versions, Rigid and Elastic, completes the range. Scannable and readable without requiring reflective sprays, it is conceived for maximum performance in acquiring 3D data, saving time, simplifying processes and improving quality.

Characteristics

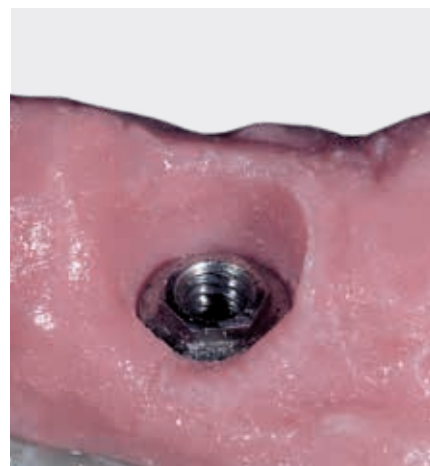
- Various hardnesses: Elastic 40 Shore A, Rigid 70 Shore A
- Setting time: 10:00
- Mixing ratio 1:1

Advantages

- Compatible with the various techniques used to make artificial gums (direct and indirect)
- Excellent aesthetic results
- With the Gingifast CAD formula, very small mixing tips can be used reducing silicone waste



Gingifast Rigid - direct technique



Gingifast Rigid



Gingifast Elastic - indirect technique



Model preparation / Gingival reproduction

Product	Recommended in the presence of undercuts	Recommended in the presence of implants
Gingifast Elastic	●	○
Gingifast Rigid	○	●
Gingifast CAD Elastic	●	●
Gingifast CAD Rigid	○	●

● highly recommended ○ recommended

Product	Mixing ratio (Base:Catalyst)	Working time* (min:s)	Setting time* (min:s)	Hardness (Shore A)	Scannable without sprays	Workable with a bur
Gingifast Elastic	1:1	2:00	10:00	40		
Gingifast Rigid	1:1	2:00	10:00	70		●
Gingifast CAD Elastic	1:1	2:00	10:00	40	●	●
Gingifast CAD Rigid	1:1	2:00	10:00	70	●	●

*The times mentioned above are intended from the start of the mixing phase at 23 °C (73 °F).



Gingifast Elastic - A-Silicone for gingival reproduction

Code	Packaging
C401500	2 x 50 ml cartridges + 1 Gingifast Separator bottle 10 ml + 12 yellow mixing tips + 12 yellow intraoral tips + 1 spray



Gingifast Rigid - A-Silicone for gingival reproduction

Code	Packaging
C401520	2 x 50 ml cartridges + 1 Gingifast Separator bottle 10 ml + 12 yellow mixing tips + 12 yellow intraoral tips + 1 spray



Gingifast CAD Elastic - Scannable A-Silicone for gingival reproduction

Code	Packaging
C203227	2 x 50 ml cartridges + 1 Gingifast Separator bottle 10 ml + 12 blue mixing tips



Gingifast CAD Rigid - Scannable A-Silicone for gingival reproduction

Code	Packaging
C203232	2 x 50 ml cartridges + 1 Gingifast Separator bottle 10 ml + 12 blue mixing tips



Cod. C400888



Gingifast Separator 2 x 10 ml bottle

Cod. C202070



Yellow mixing tips (48 pcs)

Cod. C202090



Yellow intraoral tips (48 pcs)

Cod. C202100



Dispenser D2 - 1:1

Cod. C203233



Blue mixing tips (48 pcs)



Model preparation

Custom impression trays

Elite LC Tray is the line of light-curing resin plates for making custom impression trays and removable prosthesis bases.

Easy and quick to use, it meets the needs of the dental laboratory by optimising working times without compromising on quality.

LIGHT-CURING RESINS

Elite LC Tray	60
Elite LC Tray ROUND	60

Elite LC Tray

Light-curing resins

Model preparation / Custom impression trays

Elite LC Tray is a line of light-curing resin plates for custom impression trays. Also indicated for making bases for mounting teeth and bite plates in removable prosthesis applications.

Elite LC Tray can be used to make bases and custom trays of various sizes to meet the main requirements in this application.

Elite LC Tray ROUND is particularly indicated for laboratories wanting medium-sized ergonomic plates.

Characteristics

- Cured with either halogen or UV light (3 - 5 minutes)
- Stable to daylight or artificial light for about 20:00
- Available in three colours: blue, white and pink
- Minimum shrinkage after curing

Advantages

- Easy to model, not sticky
- Quick, saves time with respect to traditional self-curing resins
- Uniform thickness



Elite LC Tray



Elite LC Tray ROUND

Product	Setting time (min:s)	Thickness	Hardness (Shore D)	Curing
Elite LC Tray	3:00 - 5:00	2.5 mm	80	UV light (350 - 400 nm) Halogen light (420 - 480 nm)
Elite LC Tray ROUND	3:00 - 5:00	2.5 mm	80	UV light (350 - 400 nm) Halogen light (420 - 480 nm)

Elite LC Tray - Light curing resin for custom impression trays

Codes	Packaging
D500011	Elite LC Tray White (50 pcs)
D500021	Elite LC Tray Pink (50 pcs)
D500031	Elite LC Tray Blue (50 pcs)

Elite LC Tray ROUND - Light curing resin for custom impression trays

Codes	Packaging
D500050	Elite LC Tray ROUND White (50 pcs)
D500052	Elite LC Tray ROUND Pink (50 pcs)
D500054	Elite LC Tray ROUND Blue (50 pcs)



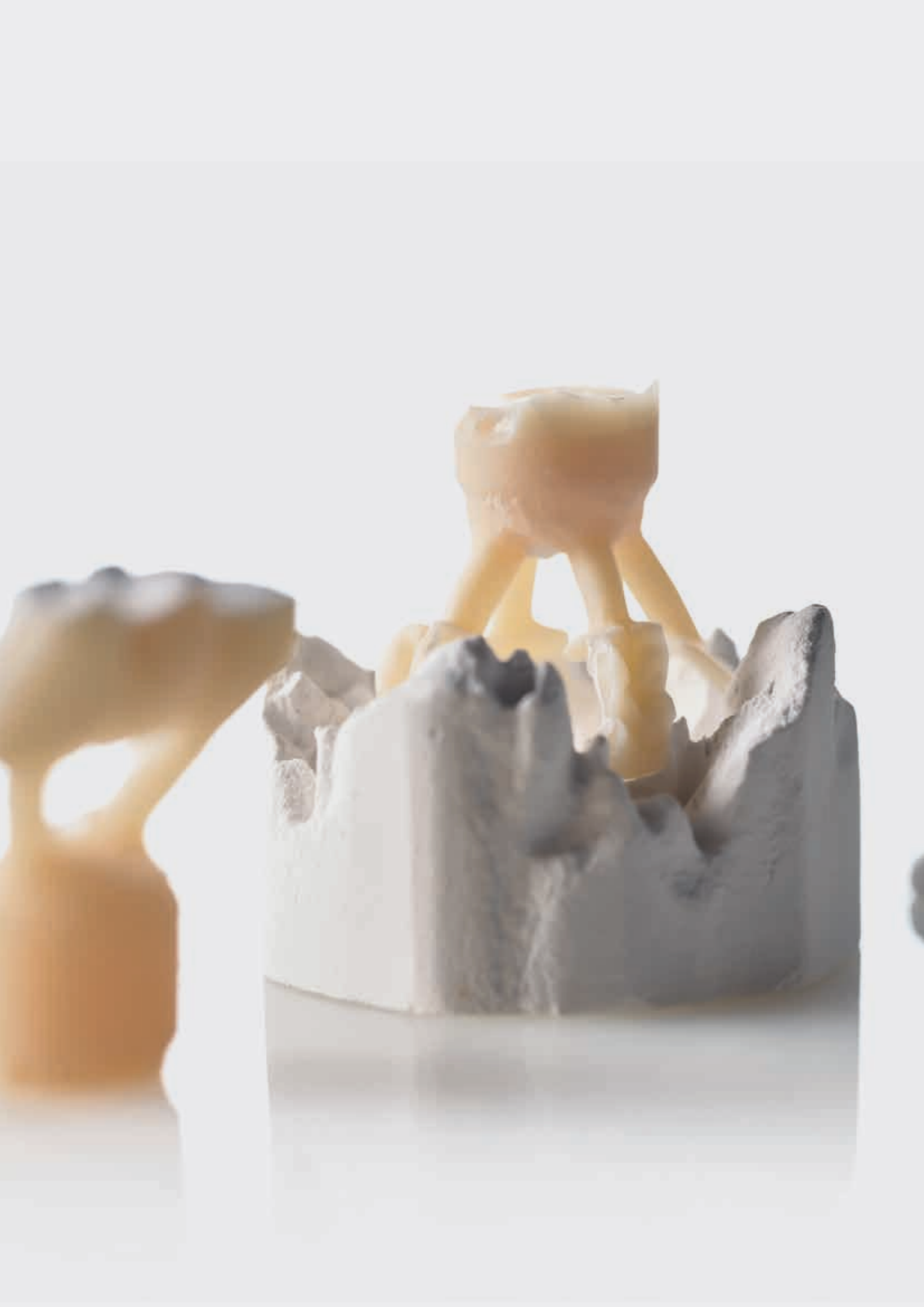




Casting

Constant research for ever better products for the user and lengthy experience in prosthodontics have enabled Zhermack to develop a system of top quality products able to work in synergy to guarantee excellent results in all phases of the process to create metal prostheses.

Zhermack investments and sands simplify the lab technician's work, enabling top quality prostheses to be made easily, quickly and cheaply.





Casting

Investments

The Elite Vest line of investments is conceived to simplify the use of the investment in the laboratory and reduce stocks.

All the most common fixed and removable prosthesis applications can be covered with just two powders (one for fixed prostheses and one for frameworks) and a universal liquid.

PHOSPHATE INVESTMENTS

Elite Vest Plus	66
Elite Vest Cast	66
Elite Vest Liquid	66

Just two types of powder and one universal liquid allow casts to be made with all alloys* and pressable ceramics.

Elite Vest Plus is the universal precision investment for fixed prostheses, compatible with non precious alloys*, precious alloys and pressable ceramics.

Elite Vest Cast is a precision investment specific for frameworks, compatible with base alloys* and precious alloys.

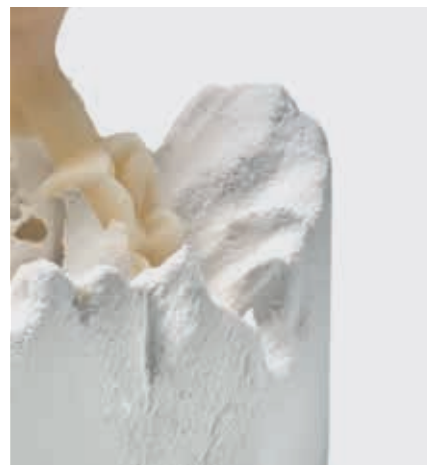
Elite Vest Liquid is the universal mixing liquid for both investments.

Characteristics

- Quick or traditional preheating
- Fine powder, carbon-free formulas with expansion adaptable to the working technique
- Excellent precision, particularly in implants and large bridges

Advantages

- Easy to use and manage: just two products for all types of work
- Flexibility: expansion can be adapted to the different needs
- Work speed: smooth alloy surface after preparation



Elite Vest Plus



Elite Vest Plus - cast metal coping



Elite Vest Plus

* excluding titanium alloys



Product	Fixed prosthesis (crowns, inlays, onlays)	Fixed prosthesis (crowns and bridges, partial crowns, inlays, onlays, telescopic crowns)				Frameworks (combined extended removable partial prosthesis in a single piece, combined extended removable partial prosthesis with clasps, normal removable partial prosthesis)
		Au alloys with a high gold content	Au alloys with a low gold content	Palladium alloys	Base alloys	
Elite Vest Plus	●	●	●	●	●	
Elite Vest Cast						●
Elite Vest Liquid	●	●	●	●	●	●

Technical features	Elite Vest Plus	Elite Vest Cast
Powder/liquid ratio (Elite Vest Liquid)	100 g / 24 - 26 ml	100 g / 18 - 20 ml
Manual mixing time (min:s)	00:15 - 00:30	00:15 - 00:20
Vacuum mixing time (320 rpm) (min:s)	00:60	00:60
Vacuum maintenance time after mixing (min:s)	00:15 - 00:30	00:10 - 00:15
Working time* (min:s)	6:00	5:00
Time in preheat oven (from start of mixing) (min:s)	23:00 - 25:00	23:00 - 25:00
Ideal liquid storage temperature	18 - 22 °C (> 5 °C)	18 - 22 °C (> 5 °C)
Preheat temperature	850 - 900 °C	900 - 930 °C
Maximum preheat temperature	1200 °C	1050 °C

*Times indicated may vary according to room temperature.



Elite Vest Plus

Code	Packaging
C420000	40 x 160 g bag



Elite Vest Cast

Code	Packaging
C420002	30 x 400 g bag



Elite Vest Liquid

Code	Packaging
C420010	Bottle 1 L



Cod. XR0000150



Ring 1 x

Cod. XR0000152



Ring 3 x

Cod. XR0000154



Ring 6 x

Cod. XR0000156



Ring 9 x



Casting

Sands

Zeta Sand is the Zhermack line of high quality sands. They are sieved a number of times to provide regular grain size and packed in 1 kg bags to minimise the effect of humidity and contamination. The range includes aluminium oxide and glass beads.

Zeta Sand 72

Zeta Sand

Sands

Casting / Sands

The **Zeta Sand** line includes aluminium oxide and glass beads, with a range of grain sizes suitable for various materials and different types of sandblasting and finishing.

Characteristics

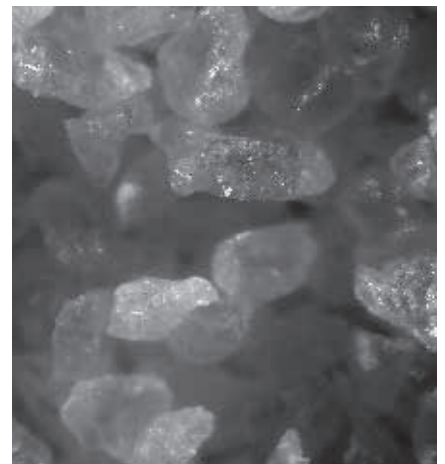
- High degree of sieving
- Single refill three-ply 1 kg aluminium pack
- Different grain sizes available

Advantages

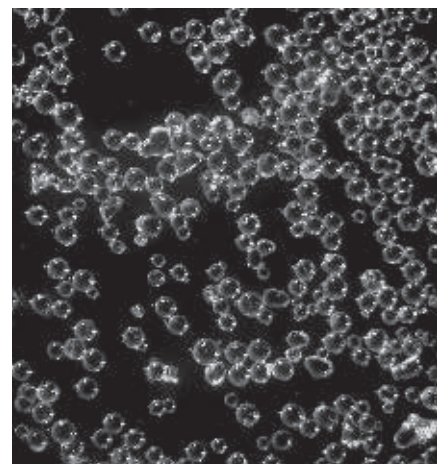
- The quality of the raw material is provided by a high degree of sieving
- The 1 kg pack protects the sands from humidity, the main cause of sandblaster malfunction
- The various grain sizes are suitable for various types of sandblasting and finishing



Zeta Sand



Zeta Sand - Aluminium oxide



Zeta Sand - Glass beads





	Oxide 50	Oxide 90 - 125	Oxide 150 - 250	Glass beads 50	Glass beads 110
Devesting pressed porcelain / inlays	●				
Gentle oxide removal / Devesting precious alloys	●				
Removal of heavy oxide layers / Devesting non-precious alloys		●	●		
Surface treatment (porcelain / resins)	●	●			
Cement removal (precious / non-precious alloys)	●				
Surface treatment before the etching of full ceramic	●				
Welding preparation		●			
Removal of residue from dentures (gypsum / tooth tartar)				●	●
Smoothing of occlusal surfaces, secondary components or crown interiors				●	
Satin finishing and smoothing of non-precious alloys					●

Zeta Sand

Code	Description	Packaging
C308202	Aluminium oxide	5 x 1 kg bag 50 µm
C308206	Aluminium oxide	5 x 1 kg bag 90 µm
C308208	Aluminium oxide	5 x 1 kg bag 110 µm
C308210	Aluminium oxide	5 x 1 kg bag 125 µm
C308216	Aluminium oxide	5 x 1 kg bag 250 µm
C308218	Glass beads	5 x 1 kg bag 40 / 70 µm
C308220	Glass beads	5 x 1 kg bag 90 / 150 µm



California: modular micro sandblaster for smoothing, polishing and roughening sandblasting prosthetic elements.
More information on page 108



Sand S 24 R: dual-module sandblasting machine with recycling system for the sandblasting of dental prostheses.
More information on page 110





Hygiene

Cleaning and disinfecting impressions coming from the dental surgery are a safeguard against infections. Choosing effective products with a complete spectrum of action is therefore essential to protect the health of laboratory technicians.

Quick acting easy-to-use products, free from toxic substances such as phenols and aldehydes. Like the products in the Zeta Hygiene range, developed from Zhermack's experience in the cold disinfection and sterilisation of medical-surgical devices. Comprehensive solutions, regulated by strict production standards and controlled and tested according to the most recent European regulations for an adequate protection every time.

nic



Zhermack

A close-up photograph of a dental instrument, possibly a scaler or probe, being cleaned in a blue liquid solution. The instrument is partially submerged, and the liquid is bubbling around it. The background is a light blue gradient.

Hygiene

Hygiene lab applications

Solutions for impressions cleaning and disinfection and for the cleaning of alginate and stone residues on instruments.

DISINFECTANT FOR IMPRESSIONS

Zeta 7 Spray 78

Zeta 7 Solution 78

TRAYS AND INSTRUMENTS GYPSUM AND ALGINATE REMOVERS

Algitray 79

Gypstray 79



Zhermack offers excellent performance products for impression disinfection. A complete spectrum (bactericidal, fungicidal, tuberculocidal and virucidal) and excellent compatibility with different types of impression material. In full compliance with the latest European Norms on disinfection.

Zeta 7 Spray is a ready to use, disinfectant spray for a quick and easy disinfection of impressions.

Zeta 7 Solution is a full spectrum concentrated disinfectant.

Characteristics

- Complete spectrum of action developed and tested according to the latest European Norms on disinfection
- Compatibility with all impression materials (silicone, alginate, polyether and polysulphides)

Advantages

- **Efficacy:** complete protection for professionals in dental practices and laboratories
- **Excellent performance:** respects the dimensional stability of impressions characteristics and their compatibility with dental stones and improves accuracy in the reproduction of stone models



Zeta 7 Spray



Zeta 7 Solution

Product	Type of product	Active ingredients	Dilution	Action time (min:s)	Distinctive characteristics	Spectrum of action
Zeta 7 Spray	Disinfectant	Alcohols	Ready to use	3:00	Improve smoothness of gypsum on impressions surfaces and reduce the formation of bubbles	Bactericidal: EN 13727 (S. aureus, P. aeruginosa, E. hirae) Fungicidal: EN 13624 (C. albicans) Tuberculocidal: EN 14348, EN 14563 (M. terrae) Virucidal: EN 14476 (tested on Poliovirus, Adenovirus, Norovirus. Parvovirus including HIV, HBV, HCV)
Zeta 7 Solution	Disinfectant	Quaternary Ammonium Salts, Phenoxyethanol	1 %	10:00	Very concentrated, allows for the preparation of up to 100 litres of disinfectant solution	Bactericidal: EN 13727 (S. aureus, P. aeruginosa, E. hirae) Fungicidal: EN 13624 (C. albicans) Tuberculocidal: EN 14348, EN 14563 (M. terrae) Virucidal: EN 14476 (tested on Poliovirus, Adenovirus, Norovirus. Parvovirus including HIV, HBV, HCV)

Code	Product	Packaging
C810050	Zeta 7 Spray	750 ml bottle with foam cap
C810048	Zeta 7 Solution	1 litre bottle





Algitray and **Gypstray** are ideal for the cleaning and removal of alginates and gypsum residues from trays and instruments. They offer deep cleaning action even in less accessible areas, protecting materials and allowing a safe use in all cases.

Algitray is a specific neutral pH cleaner for the removal of alginate residues from all types of impression trays and other instruments.

Gypstray is a ready to use solution for the removal of gypsum residues from impression trays, spatulas or other instruments.



Algitray and Gypstray

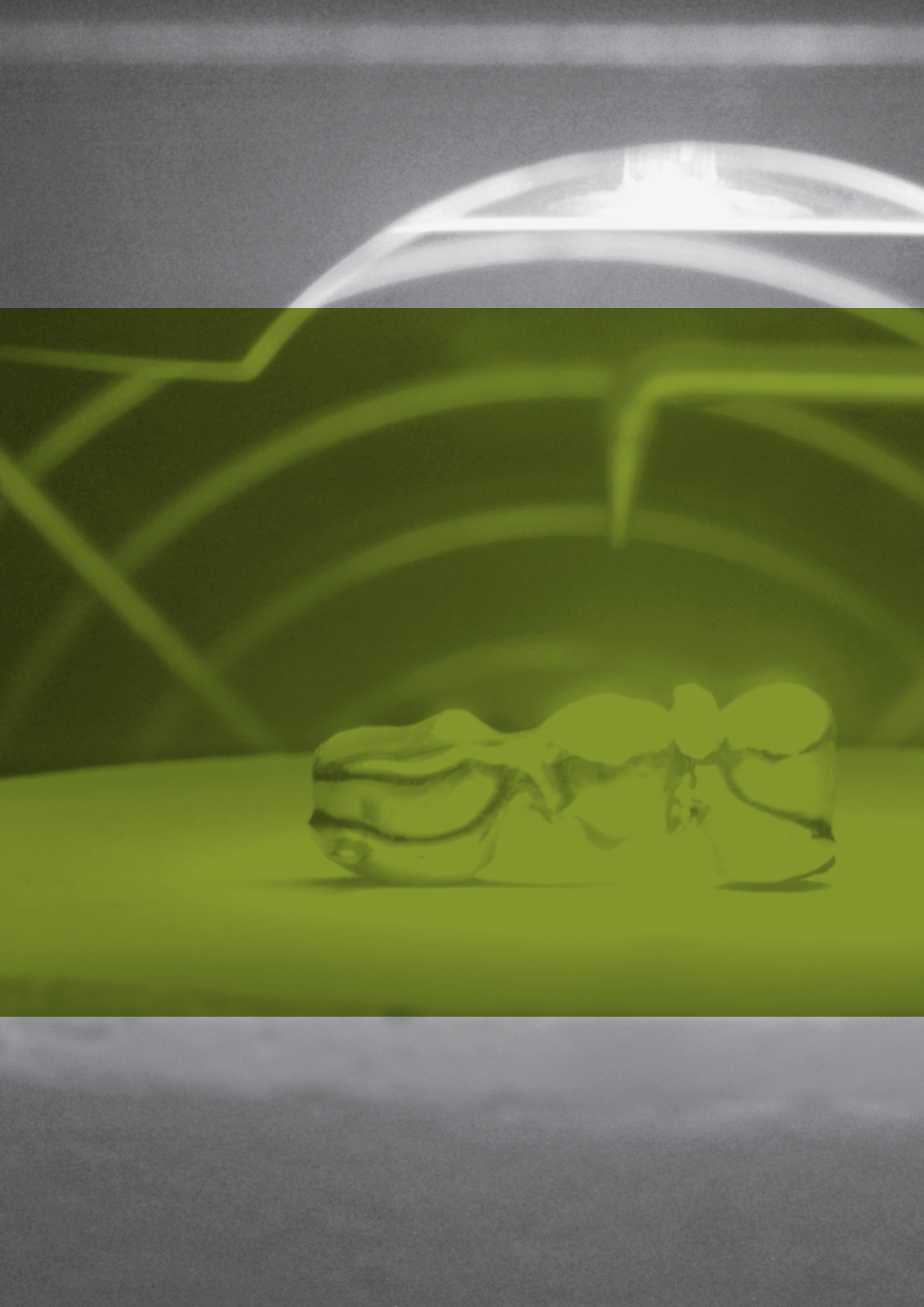
Advantages

- **Efficacy:** helps eliminate all traces of alginate and gypsum even in less accessible areas
- **Protection of materials:** non-aggressive formula

Product	Type of product	Active ingredients	Dilution
Algitray	Alginate remover	Alginate dissolvers	Solution powder: 10 %
Gypstray	Gypsum remover	Gypsum dissolvers	Ready to use

Code	Product	Packaging
C400430	Algitray powder	2 x 500 g tub (powder) + measuring cup
C400441	Gypstray	3 litres container







Equipment

An integrated system for the dental laboratory, developed by Zhermack to simplify and improve everyday work.

Consumables (addition and condensation silicones, silicones for duplication, stones, investments...) and specific high quality, technologically advanced equipment for all the main phases in the production process with maximum functionality and competitive performance.





Equipment

Model preparation

Precision, quality, satisfaction. The ideal process leading from the model to the prosthesis. Together with Zhermack consumables, Zhermack equipment is suitable to achieve a precise and top quality model, to give the patient a high quality prosthesis.

Less time, more satisfaction. For the patient and for the dentist.

VACUUM MIXER FOR STONES AND INVESTMENTS

Elite Mix 84

AUTOMATIC MIXER FOR DUPLICATION A-SILICONES

Doublemix 86

MODEL TRIMMER

SQM 25 N 88

Elite Mix

Vacuum mixer for stones and investments

Equipment / Model preparation

Elite Mix is a vacuum stone and investment mixer for model preparation. Versatile and compact, it has a functional design.

The completely electronic control provides constant mixing quality and silent operation. The software installed allows to set different parameters so that you can customize the entire mixing cycle.

Characteristics

- Ten different programs which can be set with the following parameters:
 - Spatula mixing time
 - Spatula mixing speed between 100 and 450 rpm
 - Pre-spatula mixing
 - Pre-insertion vacuum
 - Spatula rotation direction reversal interval
 - Vacuum level
- Electronic vacuum control and double filter
- Vacuum generated by membrane pump inside mixer
- Wall mounted or table top, with optional support

Advantages

- The "oil free" vacuum pump requires no maintenance
- The Elite Mix mixing bowls have rounded internal surfaces for easy removal of the mix and cleaning
- Ten customisable programmes, including six default programmes for Zhermack stones



Elite Mix with bench stand



Elite Mix

Code	Model	Size (L x D x H - mm)	Weight (kg)	Power supply (V / Hz)	Total power (W)	Speed (rpm)	Vacuum level (mmHg)
C305120	Elite Mix 230 V 50 Hz	180 x 240 x 360	8	230 V \pm 10 % / 50 Hz	150	100 - 450	600
C305121	Elite Mix 230 V 60 Hz	180 x 240 x 360	8	230 V \pm 10 % / 60 Hz	150	100 - 450	600
C305125	Elite Mix 115 V 60 Hz	180 x 240 x 360	8	115 V \pm 10 % / 60 Hz	150	100 - 450	600

STANDARD COMPONENTS

Code	Description
XR0011500	Lid with 500 cc mixing spatula

ACCESSORIES

Code	Description
XR0011510	Bench-mounted Elite Mix stand
XR0011520	Lid with 200 cc mixing spatula
XR0011500	Lid with 500 cc mixing spatula
XR0011530	Lid with 1000 cc mixing spatula
XR0011642	200 cc bowl
XR0011640	500 cc bowl
XR0011644	1000 cc bowl

Cod. XR0011510



Bench-mounted Elite Mix stand

Cod. XR0011520 + XR0011642



200 cc bowl

Cod. XR0011500 + XR0011640



500 cc bowl

Cod. XR0011530 + XR0011644



1000 cc bowl

Doublemix

Automatic mixer for duplication A-Silicones

Equipment / Model preparation

Doublemix mixer is designed to automatically dose and mix fluid addition silicones for model duplication in the laboratory.

Can be used to make single or series duplications rapidly and with great precision. Easy to use, delivers uniform bubble-free mixing with constant, quicker and more satisfying results. Fitted with a dosing pump with a mixing ratio of 1:1 and rotatable mixing tip to facilitate silicone delivery. The ease of use and compatibility with Elite Double Extra Fast (1 kg and 5 kg) and the principal duplication silicones on the market make Doublemix a versatile efficient appliance.

Characteristics

- Rapid coupling of containers with flow shut-off valve
- Adjustable plate for holding mixing tip
- Optional clear 2 kg containers for use with main types of silicone

Advantages

- Model duplication in just five minutes (using Elite Double Extra Fast)
- Consistently correct mixing ratio, thanks to the 1:1 ratio dosing pump
- Optimum control of silicone waste
- The quick connection system and flow shut-off valves prevent the formation of air bubbles during silicone delivery



Doublemix



Doublemix

Code	Model	Size (L x D x H - mm)	Weight (kg)	Power supply (V / Hz)	Total power (W)
C309020	Doublemix 230 V	265 x 360 x 330	17	230 V \pm 10 % / 50 - 60 Hz	260
C309021	Doublemix 115 V	265 x 360 x 330	17	115 V \pm 10 % / 50 - 60 Hz	260

STANDARD COMPONENTS

Code	Description
XR0240040	Adapter with quick connection to male base for 1 kg Elite Double bottle
XR0240050	Adapter with quick connection to female catalyst for 1 kg Elite Double bottle
C202070	Yellow mixing tips (48 pcs)
XR0240150	Bayonet filters for air venting
XR0240140	Working area support plate with centred flask
XH9900010	Allen wrench for mixing maintenance locking

ACCESSORIES

Code	Description
XR0240030	Bracket Kit + front 5 kg Elite Double tank support (2 pcs)
XR0240010	Plug with male base quick connection for Elite Double 5 kg tanks
XR0240020	Plug with female catalyst quick connection for Elite Double 5 kg tanks
XR0240040	Adapter with quick connection to male base for 1 kg Elite Double bottle
XR0240050	Adapter with quick connection to female catalyst for 1 kg Elite Double bottle
XR0240070	2 kg clear container with female catalyst quick connection
XR0240060	2 kg clear container with male base quick connection
C202070	Mixing tips yellow (48 pcs)

Cod. XR0240030



Bracket Kit + front 5 kg Elite Double tank support (2 pcs)

Cod. XR0240070 - Cod. XR0240060



2 kg clear container with female catalyst quick connection

2 kg clear container with male base quick connection

Cod. XR0240010 - Cod. XR0240020



Plug with male base quick connection for Elite Double 5 kg tanks

Plug with female catalyst quick connection for Elite Double 5 kg tanks

SQM 25 N

Model trimmer

Equipment / Model preparation

SQM 25 N is designed for wet trimming of stone models.

It is fitted with a constantly functioning water cooling and washing system controlled automatically by a solenoid valve. The abrasive disc makes trimming precise, enabling the operator to meet the specific technical requirements of the task.

Characteristics

- Water flow controller on front
- Aluminium case
- Abrasive bakelite disc complying with FEPA standards, AR 30



SQM 25 N

Advantages

- The use of water helps reduce dust and keep the laboratory clean



SQM 25 N

Code	Model	Size (L x D x H - mm)	Weight (kg)	Power supply (V / Hz)	Total power (W)	Speed (RPM)	Disk size (mm)
C305905	SQM 25 N	370 x 320 x 340	16.5	230 V ± 10 % / 50 Hz	600	2800	Ø 255 / thick. 6.5 / hole Ø 25.5

STANDARD COMPONENTS

Code	Description
XR0091100	Abrasive disc for SQM 25 N (water)

ACCESSORIES

Code	Description
XR0090036	Worktop surface
XR0090140	Orthodontic support





Equipment

Casting and welding

Thirty-five years' experience in designing and making pre-heating furnaces. A solid background allowing Zhermack to produce technologically advanced appliances designed to satisfy the various needs of the dental laboratory.

With maximum functionality and complete operator safety.

PRE-HEATING FURNACES

DM	92
DE	92

INFRARED WELDING MACHINES

Quasar	94
Quasar Plus	94

ELECTRONIC HEATER

Cyclope	96
---------------	----

Zhermack offers classic and fast investment pre-heating furnaces.

DM series consists of multi-programme pre-heating furnaces indicated for preheating overnight and fast investments.

DE series are one-programme pre-heating furnaces with two holding phases, indicated for preheating fast investments.

Characteristics

DM

- Tube heating system: the heating elements are housed in special alumina tubes to offer high performance and reliability
- 10 storable four-phase programmes. The aspirator OFF temperature can be set
- Starting delay, with the possibility of setting the day and hour when the oven will start operation
- Optional fume extractor

DE

- Programme with one firing cycle consisting of two holding phases, each with the possibility of setting:
 - Temperature
 - Holding time
 - Heating speed
- Starting delay

Advantages

- The tube heating system makes heat exchange more efficient than in a traditional muffle
- Lower electricity consumption
- Reliability over time
- A programme can be modified, even while running



DM 40



DE 2



DM

Equipment	Fast investments	Overnight investments
DM	●	●
DE	●	

Code	Model	Size (L x D x H - mm)	Weight (kg)	Power supply (V / Hz)	Total power (W)	Internal chamber size (L x D x H - mm)	Rings capacity
C305300	DM 30	280 x 320 x 460	15	230 V ± 10 % / 50 - 60 Hz	1550	120 x 160 x 95	3 x - 4 pcs 9 x - 2 pcs
C305304	DM 40	350 x 370 x 490	26	230 V ± 10 % / 50 - 60 Hz	2000	170 x 160 x 110	3 x - 6 pcs 9 x - 4 pcs
C305308	DM 50	350 x 470 x 490	30	230 V ± 10 % / 50 - 60 Hz	2400	170 x 260 x 110	3 x - 11 pcs 9 x - 6 pcs
C305315	DE 1	250 x 320 x 430	15	230 V ± 10 % / 50 - 60 Hz	1700	120 x 160 x 95	3 x - 4 pcs 9 x - 2 pcs
C305316	DE 2	360 x 370 x 480	26	230 V ± 10 % / 50 - 60 Hz	2400	170 x 160 x 110	3 x - 6 pcs 9 x - 4 pcs

STANDARD COMPONENTS DM

Code	Description
XI0030030	Vent
XI0030070	Ribbed refractory plate (DM 30)
XI0030073	Ribbed refractory plate (DM 40)
XI0030075	Ribbed refractory plate (DM 50)
XB0030370	Square refractory tube (DM 30) 2 pcs
XB0030180	Square refractory tube (DM 40 - 50) 2 pcs
XI0031010	Door open/close handle
XE9900140	Hood socket

STANDARD COMPONENTS DE

Code	Description
XI0030030	Vent
XI0031010	Door open/close handle

ACCESSORIES DM

Code	Description
C305319	Extractor for models DM

Quasar is an infrared welding machine for braze welding on precious metals and base alloys without direct flame.

Quasar welding machine is designed to produce thermal energy by means of an optical infrared system generating a maximum temperature of 1350°C. Quasar Plus has the same technical characteristics as Quasar welding machine, with the addition of a pedal device for spot welding the metal structure in argon atmosphere*.

Characteristics

- Perfect thermal energy focussing on specific welding area
- Power regulation system allowing the heating temperature to be set. This allows the elements for welding to be heated gradually, avoiding damage to the crystalline structure
- Mechanical centring system for accurate spot welding of the elements

Advantages

- Quick and easy to learn welding method
- Infrared welding eliminates combustion and oxidation during the heating phase
- The Quasar Plus welding process is quicker than traditional and laser methods



Quasar Plus



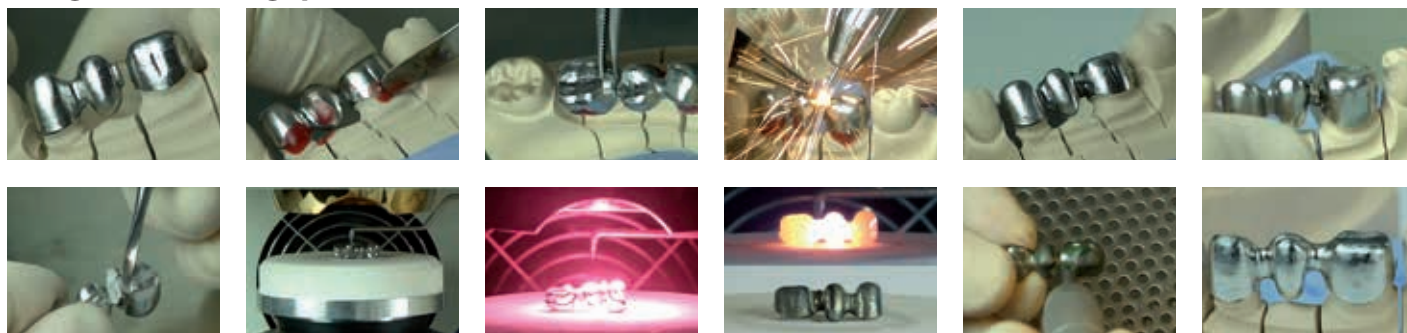
Quasar

Code	Model	Size (L x D x H - mm)	Weight (kg)	Power supply (V / Hz)	Total power (W)	Max. temperature (°C)
C306800	Quasar Infrared welding machine	250 x 360 x 500	28	230 V ± 10 % / 50 - 60 Hz	1200	1350
C306810	Quasar Plus Infrared welding machine with spot welding device	250 x 360 x 500	29	230 V ± 10 % / 50 - 60 Hz	1200	1350

*argon is not supplied with this machine. Ask a trusted supplier

Examples of application

Bridge with 2 mm gap



Implant bar



Framework



STANDARD COMPONENTS

Code	Description
XB0180216	Electrodes CR/CO (for ceramics) 3 pcs Ø 0.8 mm for Quasar Plus
XI0180300	Protective glasses

ACCESSORIES

Code	Description
XR0180050	Cr/Co electrocodes (for ceramics) 10 pcs Ø 0.8 mm
XR0180070	Cr/Co electrocodes (for ceramics) 10 pcs Ø 0.5 mm
XR0180060	Cr/Co electrocodes (for removable prostheses) 10 pcs Ø 0.8 mm
XR0180080	Cr/Co electrocodes (for removable prostheses) 10 pcs Ø 0.5 mm
XR0180090	Au electrocodes (for gold alloy) 10 pcs Ø 0.8 mm
XR0180100	Au electrocodes (for gold alloy) 10 pcs Ø 0.5 mm
XR0180270	Protective glasses

Cyclope is designed to heat metal spatulas and similar tools used to model objects in dental wax. Electromagnetic induction heating.

With Cyclope, the majority of dental modelling can be done without using an open flame bunsen burner.

Characteristics

- Electrical operation does not require connection to the mains gas supply
- The instrument reaches temperature in just two seconds
- Two silicon caps protect the chamber from scratches and wax residues



Cyclope

Advantages

- Safety: no risk of burns and better air quality in the dental laboratory thanks to elimination of the naked flames which remove oxygen from the work environment
- Practicality: mobile and ready for use immediately, can be located in the most convenient position for the operator
- Energy saving: minimum consumption thanks to the heating control with two external sensors



Cyclope

Code	Model	Size (L x D x H - mm)	Weight (kg)	Power supply (V / Hz)	Total power (W)
C308300	Cyclope 230 V	91 x 209 x 89	0.5	230 V \pm 10 % / 50 - 60 Hz	100

STANDARD COMPONENTS

Code	Descrizione
XR0100000	Protective silicone cap (2 pcs)



Zhermack //





Equipment

Surface polishing and cleaning

Good surface cleaning is fundamental for good final results. Thanks to its experience producing steam generators, Zhermack can offer valid equipment to support lab technicians during the finishing phase.

STEAM CLEANERS

VAP 8A and VAP 8 100

VAP 6A and VAP 6 102

WATER SOFTENER

AD 8 104

ULTRASONIC BATH

Zeta Sonic 106

SANDBLASTERS

California 108

Sand S 24 R 110

EXTRACTOR FOR SANDBLASTING MACHINES AND MODEL TRIMMERS

SAB 1000 111

The result of twenty years' experience making steam generators, Zhermack's **VAP 8** range satisfies the dental laboratory's needs for in-depth cleaning, heating power and long operating time.

Power, reliability and safety are the distinguishing characteristics of the VAP 8 and VAP 8A line of hot water and steam generators, designed for a long working life.

The VAP 8 and VAP 8A generate a flow of steam or hot water at high pressure, used to clean prostheses for dental use.

Characteristics

- Fixed 8 bar nozzle for dry steam
- Antistatic safety device
- Maximum working pressure 8 bar
- Electronic heating element protection system: when the water runs out, the system cuts off power to protect the heating element
- TSS (Triple Safety System)*
- Stainless steel 4 litre tank
- VAP 8: steam only
- VAP 8A: water and steam

Advantages

- High pressure to satisfy the cleaning needs of the laboratory or surgery
- Reliability provided by high quality components and the experience in making steam generators
- CE certified safety (EMC, LVD and PED), EN61010



VAP 8A



VAP 8 | VAP 8A



VAP 8 | VAP 8A

Machine	Fixed prosthesis (steam only)	Removable prosthesis (only steam or water + steam)
VAP 8A	●	●
VAP 8	●	

*Triple Safety System, 8 bar pressure switch, 9.5 bar safety pressure switch and certified numbered 12 bar safety valve.

Code	Model	Size (L x D x H - mm)	Net weight (kg)	Power supply (V / Hz)	Total power (W)	Water/steam	Filling	Max temperature (°C)	Optional pedal
C305220	VAP 8 230 V	370 x 450 x 380	20	230 V ± 10 % / 50 Hz	1700	Steam	Manual	170	No
C305225	VAP 8 230 V with pedal	370 x 450 x 380	20	230 V ± 10 % / 50 Hz	1700	Steam	Manual	170	Yes
C305223	VAP 8A 230 V	370 x 450 x 380	20	230 V ± 10 % / 50 Hz	1700	Water and steam	Automatic	170	No
C305226	VAP 8A 230 V with pedal	370 x 450 x 380	20	230 V ± 10 % / 50 Hz	1700	Water and steam	Automatic	170	Yes
C305222	VAP 8 115 V	370 x 450 x 380	20	115 V ± 10 % / 60 Hz	1700	Steam	Manual	170	No
C305242	VAP 8 115 V with pedal	370 x 450 x 380	20	115 V ± 10 % / 60 Hz	1700	Steam	Manual	170	Yes
C305236	VAP 8A 115 V	370 x 450 x 380	20	115 V ± 10 % / 60 Hz	1700	Water and steam	Automatic	170	No
C305238	VAP 8A 115 V with pedal	370 x 450 x 380	20	115 V ± 10 % / 60 Hz	1700	Water and steam	Automatic	170	Yes

STANDARD COMPONENTS

Code	Description
XI0020255	Water filler funnel (VAP 8)
XE0802100	Fuse
XI0020030	Gun support hook
XF0486320	Water inlet/outlet tap connection hoses (VAP 8A)

ACCESSORIES

Code	Description
XR0024110	Litre counter

VAP 6 and **VAP 6A** generate a flow of steam or hot water at high pressure to clean prostheses for dental use.

Characteristics

- Maximum working pressure 6 bar
- Electronic heating element protection system: when the water runs out, the system cuts off power to the heating element
- TSS (Triple Safety System)*
- Stainless steel 4 litre tank
- VAP 6: steam only
- VAP 6A: water and steam



VAP 6

Advantages

- Top quality components for long-lasting reliability
- Ease of use
- CE certified safety (EMC, LVD and PED), EN61010



VAP 6A

Machine	Fixed prosthesis	Removable prosthesis (only steam or water + steam)
VAP 6A	●	●
VAP 6	●	

*Triple Safety System, 6 bar pressure switch, 8 bar safety pressure switch and certified numbered 10 bar safety valve.

Code	Model	Size (L x D x H - mm)	Net weight (kg)	Power supply (V / Hz)	Total power (W)	Water/steam	Filling	Max temperature (°C)	Optional pedal
C305201	VAP 6 - 230 V	290 x 460 x 420	15	230 V ± 10 % / 50 Hz	1700	Steam	Manual	140	No
C305202	VAP 6 - 230 V with pedal	290 x 460 x 420	15	230 V ± 10 % / 50 Hz	1700	Steam	Manual	140	Yes
C305203	VAP 6A - 230 V	290 x 460 x 420	15	230 V ± 10 % / 50 Hz	1700	Water and steam	Automatic	140	No
C305210	VAP 6A - 230 V with pedal	290 x 460 x 420	15	230 V ± 10 % / 50 Hz	1700	Water and steam	Automatic	140	Yes
C305205	VAP 6 - 115 V	290 x 460 x 420	15	115 V ± 10 % / 60 Hz	1700	Steam	Manual	140	No
C305240	VAP 6 - 115 V with pedal	290 x 460 x 420	15	115 V ± 10 % / 60 Hz	1700	Steam	Manual	140	Yes
C305230	VAP 6A - 115 V	290 x 460 x 420	15	115 V ± 10 % / 60 Hz	1700	Water and steam	Automatic	140	No
C305232	VAP 6A - 115 V with pedal	290 x 460 x 420	15	115 V ± 10 % / 60 Hz	1700	Water and steam	Automatic	140	Yes

STANDARD COMPONENTS

Code	Description
XE0802100	Fuse
XI0020255	Water filler funnel (VAP 6)
XI0020030	Gun support hook
XF0486320	Water inlet/outlet tap connection hose (VAP 6A)

ACCESSORIES

Code	Description
XR0024110	Litre counter

AD 8 is a water softener recommended for steam generators with mains water fill.

A cation resin water softener is the ideal solution, indispensable to prolong steam generator life.

In addition, by adding a simple T-junction, it can also supply demineralised water for other laboratory uses.

Characteristics

- Made from stainless steel
- Guaranteed continuous water delivery, even during resin regeneration
- Regenerated using NaCl (coarse cooking salt)

Advantages

- The water softener extends the working life of the steam generator
- It produces demineralised water for other uses in the laboratory (e.g. for mixing stone), thus improving the quality of the elements
- Low maintenance costs (resin regeneration using coarse cooking salt)



AD 8



AD 8

Code	Model	Size (L x D x H - mm)	Weight (kg)	Maximum flow rate (l / h)	Material	Resins	Resin regeneration	Incoming water pressure (bar)
C305208	AD 8	300 x 200 x 400	8.5	900	Stainless steel	Cation	NaCl (coarse cooking salt)	1 - 8



Zeta Sonic is an ultrasonic bath for a rapid and deep cleaning of dental prostheses and tools in metal, plastic, glass, ceramic or other materials.

Characteristics

- Stainless steel bath
- Waterproof display
- Innovative sweep and degas function
- Display to regulate time and temperature
- Auto-OFF (after 12 hours)



Zeta Sonic

Advantages

- Practicality: it helps in reducing the time for cleaning prostheses from gypsum or other materials. It speeds up the action of alginate and gypsum removal products
- Smart machine: maintains the temperature set during use and turns off by itself after 12 hours

Code	Model	Size (L x D x H - mm)	Weight (kg)	Power supply (V / Hz)	Total power (W)	Internal tank dimensions (mm)	Volume/max. volume	Ultrasound frequency (kHz)	Max. ultrasonic effective power	Medical
C306403	Zeta Sonic 230 V	300 x 179 x 214	≈3.3	230 V ± 10 % / 50 - 60 Hz	280	240 x 137 x 100	1.90 / 2.75	37	80 / 320	Class I

STANDARD COMPONENTS

Cod. XC0140001



Basket

Cod. XC0140002



Filter

Cod. XI0140002



Lid/tray for basket

Cod. XR0140001



Drain hose

Cod. XR0140002



Drain kit

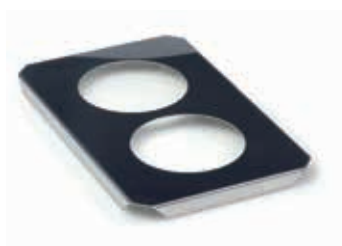
ACCESSORIES

Cod. XR0140003



Glass beaker with lid

Cod. XR0140008



Lid for beakers

Cod. XR0140027



Rack for burs

California is a modular micro sandblaster for smoothing, polishing and roughening sandblasting prosthetic elements.

Conceived to support the lab technician during sandblasting, this tool is efficient, simple to use and fast.

Thanks to its technical features, the California sandblaster is designed for a long working life, while at the same time improving the quality and ease of sandblasting and, above all, reducing consumption and working costs.

Characteristics

- Pinch valve to stop the flow of air and sand instantly, appreciably reducing sand consumption.
- Constant flow. Designed down to the smallest detail to obtain a constant flow even at low pressures:
 - Double flow of air in the cylinder (25 - 70 μm cylinder only)
 - Double flow of air in the cylinder base (all cylinders)
 - Calibrated tubes and parabolic nozzle
- Designed to last. Technical design focussing on improved reliability: inlet tubes entering the chamber directly, high quality pneumatics

Advantages

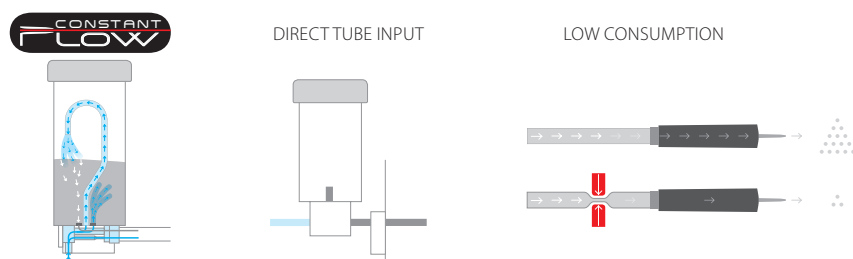
- Low consumption
- Constant flow even at low pressures (particularly indicated for pressed ceramics and cosmetic elements, such as veneers)



California



California



Code	Model	Size (L x D x H - mm)	Weight (kg)	Power supply (V / Hz)	Total power (W)	Operating pressure (bar)	Required input pressure (bar)	Tank capacity (l)	Sand (μm)
C305621	California 2 cylinders	460 x 490 x 435	13	230 V ~ $\pm 10\%$ 50 / 60 Hz 115 V ~ $\pm 10\%$ 50 / 60 Hz	50	2 - 6	6 - 8	1	25 - 250
C305620	California 3 cylinders	460 x 580 x 490	13	230 V ~ $\pm 10\%$ 50 / 60 Hz 115 V ~ $\pm 10\%$ 50 / 60 Hz	50	2 - 6	6 - 8	1	25 - 250

Use of California in 115 V~ requires suction 115 V~ with adapter

STANDARD COMPONENTS

Code	Description
XH9900111	Long parabolic nozzle Ø 0.8 mm
XH9930040	Short nozzle Ø 1.3 mm
XI0060070	Sandblasting gloves

STANDARD COMPONENTS

Code	Description
XI0060725	Glass protection sheet
XI0065261	LED lighting protection sheet
XF0464130	Extraflex 6 / 4 connection tube 1.5 m

ACCESSORIES

Cod. XR0061600



Additional module (70 - 250 micron sand)

Cod. XR0061550



Double suction kit

Cod. XR0060040



Short nozzle Ø 0.8

Cod. XR0061890



Long parabolic nozzle Ø 1.3 mm



Zeta Sand: aluminium oxide and glass beads for sanding.
More information on page 72



SAB 1000: Extractor for sandblasting machines.
More information on page 111

Sand S 24 R

Sandblaster with recycling system

Equipment / Surface polishing and cleaning

Sand S 24 R is a dual-module sandblasting machine with recycling system for the sandblasting of dental prostheses.

Used for devesting, roughening and surface treatments.

Characteristics

- Recycling system, equipped with Widia nozzle (ø 3 mm), which allows reuse of material deposited on the bottom in rough-shaping operations
- Equipped with two cylinders with a usable capacity of approximately 0.5 litres each
- Cylinder selector inside the chamber

Advantages

- Low sand consumption thanks to the recycling system
- Greater dependability and low maintenance for a minimum investment cost



Sand S 24 R

Code	Model	Size (L x D x H - mm)	Weight (kg)	Power supply (V / Hz)	Total power (W)	Operating pressure (bar)	Required input pressure (bar)	Tank capacity (l)	Sand (µm)	Recycling
C305604	Sand S 24 R	370 x 420 x 370	11	230 V ± 10 % / 50 - 60 Hz	9	3 - 6	6 - 8	0.5	25 - 250	Yes

STANDARD COMPONENTS

Code	Description
XR0060040	Nozzle ø 0.8 mm

Code	Description
XR0060050	Nozzle ø 1.3 mm

ACCESSORIES

Code	Description
XR0060050	Widia nozzle ø 1.3 mm for sands from 110 to 250 µm
XR0060040	Widia nozzle ø 0.8 mm for sands from 60 to 110 µm
XH9900050	Nozzle ø 3 mm for sand recycle

Code	Description
XR0060612	Extra filter for Sand S 24 R
XR0060065	Glass protection sheet (10 pcs)



Zeta Sand: aluminium oxide and glass beads for sanding.
More information on page 72



SAB 1000: Extractor for sandblasting machines.
More information on page 111

SAB 1000

Extractors for sandblasting machines and model trimmers

Equipment / Surface polishing and cleaning

SAB 1000 aspirator is designed for use with sandblasters.

Characteristics

- High power and reliability
- Guaranteed filtering up to 0.3 µm
- Two-ply filter paper specifically for extrafine sands

Advantages

- Excellent aspiration of sand from the blasting chamber
- Reliable, easy cleaning and maintenance
- Powerful constant aspiration



SAB 1000

Code	Model	Size (L x D x H - mm)	Weight (kg)	Power supply (V / Hz)	Total power (W)	Air flow (m ³ / h)
C305608	SAB 1000 Extractor for sandblasting machines	420 x 420 x 560	9	230 V ± 10 % / 50 - 60 Hz	1000	150

ACCESSORIES

Code	Description
XR0060010	Triple filter bag (for SAB 1000 - 10 pcs)

A C

AD 8
page 104

Algitray
page 79

California
page 108

Cyclope
page 96

D

DE
DM
page 92

Doublemix
page 86

E

Elite Arti
Elite Arti Fast
page 26

Elite Base
page 22

Elite Double 16 Extra Fast
Elite Double 16 Fast
Elite Double 22
Elite Double 22 Extra Fast
Elite Double 22 Fast
Elite Double 32
Elite Double 32 Fast
Elite Double 8
page 46

Elite LC Tray
Elite LC Tray ROUND
page 60

Elite Master
page 14 - 22

Elite Mix
page 84

Elite Model
Elite Model Fast
page 24

Elite Ortho
page 27

Elite Rock
Elite Rock Fast
page 14 - 22

Elite Stone
page 22

Elite Transparent
page 32

Elite Vest Cast
Elite Vest Liquid
Elite Vest Plus
page 66

G

Gingifast CAD Elastic
Gingifast CAD Rigid
page 15 - 54

Gingifast Elastic
Gingifast Rigid
page 54

Gypstray
page 79

I O

Indurent Gel
page 40

Occlufast CAD
page 13

P Q S

Platinum 75 CAD
page 12 - 36

Platinum 85
Platinum 85 TOUCH
Platinum 95
page 36

Quasar
Quasar Plus
page 94

SAB 1000
page 111

Sand S 24 R
page 110

SQM 25 N
page 88

T V

Titanium
page 40

VAP 6
VAP 6A
page 102

VAP 8
VAP 8A
page 100

Z

Zeta 7 Solution
Zeta 7 Spray
page 78

Zeta Sand
page 72

Zeta Sonic
page 106

Zetalabor
page 40

Fulfilling your needs