

doublemix



Equipment

Duplication silicone dispensing unit

Zhermack 
Dental



doublemix

DOUBLEMIX is the new automatic **A-Silicone** mixer for duplications developed by **ZHERMACK** offering speed and constant quality in all daily duplications.

Its easy handling and ease of use with **elite double extra fast** (1 kg and 5 kg) make **DOUBLEMIX** extremely versatile.

Its simple, modern design integrates perfectly into all types of dental laboratories and the solidity of its base materials are guarantee to last longer over time.

doublemix

**Modern
Design**



Zhermack 
Dental



DOUBLEMIX simplifies the daily mixing process as it allows for quick silicone mixing, making it highly efficient.

APPLICATIONS

doublemix

■ Single duplication



■ Multiple duplications



**Flow
alignment**



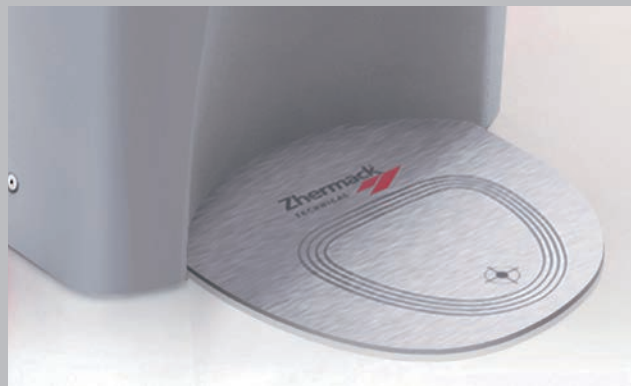
FEATURES

- Dosing pump with 1:1 mixing ratio
- Adjustable plate for holding mixing tip
- Anodised aluminium support with flask alignment
- Adjustable container support brackets (optional)
- Quick container insertion with flow shut-off valve
- Suitable for direct connection to all **elite double** pack sizes (1 kg and 5 kg)
- Sintered bayonet filters for air venting from tanks
- Clear containers, 2 kg capacity (optional)



■ **FLOW ALIGNMENT:**

the adjustable plate provides easier mixing tip insertion and a homogeneous delivery of the silicone inside the flask.



■ **CENTRED FLASK:**

the simple, functional aluminium support helps positioning the flask properly on to the work surface.



■ **OPTIONAL CONTAINERS:**

two extra containers available on demand, it can be used with all the liquid silicones in the market.

HIGHLIGHTS

doublemix



■ **QUICK CONNECTIONS:**

the rapid, safe and secure connection and connecting system flow shut off valve ensure the operator does not make mistakes between base and catalyst components and prevent air bubbles.



■ **DESIGN:**

state-of-the-art design with adjustable support brackets are compatible with all **elite double** formats.



■ **STARTING BUTTON:**

specially positioned in the middle to facilitate the filling of the flask.

ZHERMACK recommends using
the new mixer with
elite double extra fast.

doublemix

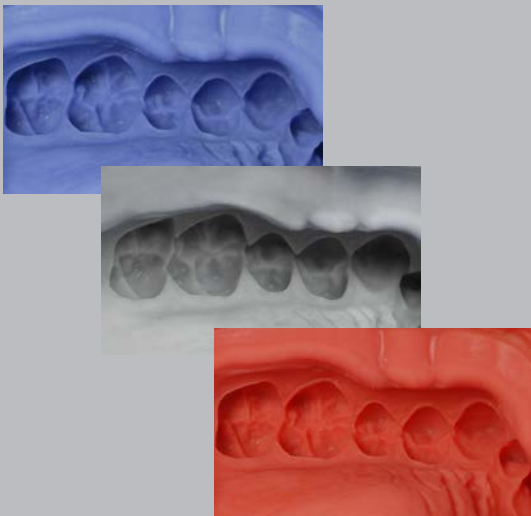


ELITE DOUBLE 16 EXTRA FAST

ELITE DOUBLE 22 EXTRA FAST

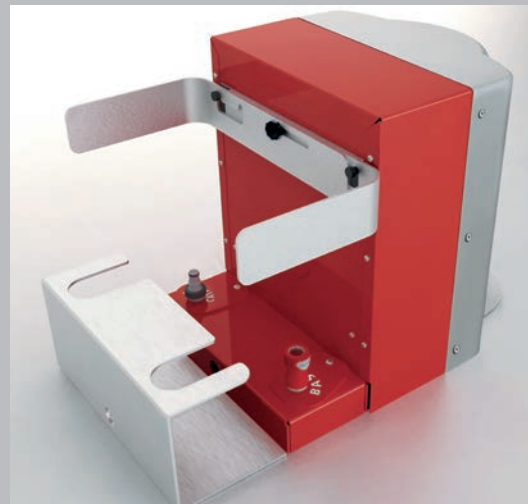
ELITE DOUBLE 32 EXTRA FAST

TECHNICAL ADVANTAGES



■ **UNIFORMITY AND REPETITIVENESS:**

Thanks to its state of the art dosing pump, **DOUBLEMIX** guarantees a drip-free, bubble-free surface allowing repeated duplications unlike manual mixing.



■ **VERSATILITY:**

Quick connections with all **elite double** sizes eliminates the manual dosing phase, ensuring high precision and the correct 1:1 mixing ratio every time.



■ **TIME-SAVING SPEED:**

Use of Doublemix in combination with **elite double extra fast** allows for model duplications in about 6 minutes.

1 1/2 min. mixing time

5 min. setting time

doublemix



Models

Code	Model	Dimensions	Weight	Voltage	Power
C309020	Doublemix - 230 V	W 360 – D 265 – H 330 mm	17 kg	230 V ±10% 50 - 60 Hz	260 Watt
C309021	Doublemix - 115 V	W 360 – D 265 – H 330 mm	17 kg	115 V ±10% 50 - 60 Hz	260 Watt
C309022	Doublemix - 230 V - UK version	W 360 – D 265 – H 330 mm	17 kg	230 V ±10% 50 - 60 Hz	260 Watt

Accessories

XR0240030	Bracket Kit + front 5 kg elite double tank supports	XR0240070	2 kg clear container with female catalyst quick connection
XR0240010	Plug with male base quick connection for elite double 5 kg containers	XR0240060	2 kg clear container with male base quick connection
XR0240020	Plug with female catalyst quick connection for elite double 5 kg containers		

Duplication Silicones

C400848	Elite double 16 Shore A extra fast 5 kg + 5 kg	C400853	Elite double 32 Shore A extra fast 5 kg + 5 kg
C400838	Elite double 22 Shore A extra fast 1 kg + 1 kg	C400530	Tensilab 120 ml bottle - debubbleising spray
C400849	Elite double 22 Shore A extra fast 5 kg + 5 kg		

BRANCHES

GERMANY

Zhermack GmbH Deutschland

Öhlmühle 10 - D-49448 Marl

T +49 (0) 54 43 / 20 33 - 0
F +49 (0) 54 43 / 20 33 - 11
info@zhermack.de
www.zhermack.de

POLAND

Zhermapol Sp. z o.o.

ul. Augustówka 14
02 - 981 Warszawa - Polska

T +48 22 858 82 72
+48 22 292 71 17
F +48 22 642 07 14
biuro@zhermack.com
www.zhermapol.pl

USA

Zhermack Inc.

P.O. Box 4195, River Edge
New Jersey 07661 - 4195

T +1 (877) 819 6206
+1 (732) 389 8540
F +1 (732) 389 8543
info@zhermackusa.com
www.zhermackusa.com

Zhermack S.p.A. | Via Bovazecchino, 100 | 45021 Badia Polesine (RO) ITALY
T +39 0425 597611 | F +39 0425 53596 | info@zhermack.com | www.zhermack.com

Zhermack