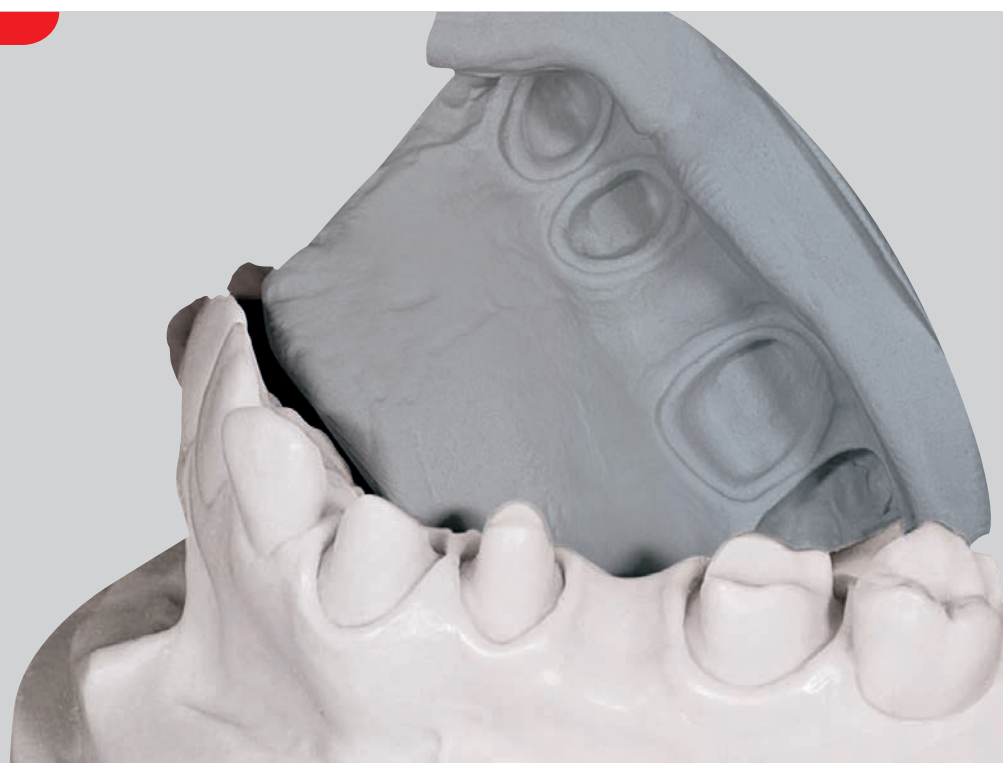


# LAB SILICONES



Simplify your work

**Lab Silicone Solutions**, a wide range of silicones to simplify the activities carried out in the dental laboratory, include **Zetalabor**, **Titanium**, **Platinum 85**, **Platinum 95** and **Elite Transparent**.

# ZETALABOR

## Rigid C-Silicone Lab Putty

**Zetalabor** allows time-saving procedures and improves the daily performance of the dental technician.

### APPLICATIONS

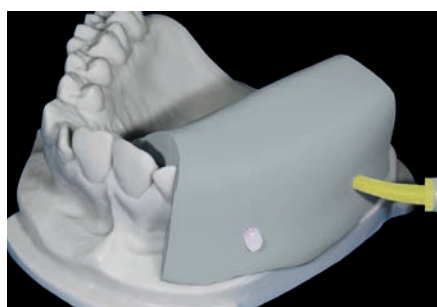
- Matrix to build partial or full dentures on the master model
- Control matrix for designing metal structures
- Models for repairing/duplicating full dentures
- Matrix for making temporary crowns/bridges
- Matrix for reproduction of gingival tissue on the models (indirect technique)
- Isolation of dentures in the flask

### ADVANTAGES

- Smooth surface after polymerization
- Accurate **reproduction of details**
- Reliable **dimensional stability**
- High final hardness
- Pigmented free formulation
- Boil-proof



Control matrix for designing metal structure



Matrix for reproduction of gingival tissue

# TITANIUM

## Extra Rigid C-Silicone Lab Putty

**Titanium** offers an exclusive formulation that uses specific derivatives to achieve rigidity and high heat resistance.

### APPLICATIONS

- Models for dentures repair
- Control matrix for designing metal structures
- Isolation of dentures in the flask

### ADVANTAGES

- Extra **rigid formulation**
- High **heat resistance**
- Good dimensional stability
- Easy-to-cut



Denture Repair



Matrix for making temporary crowns/bridges

# PLATINUM 85

## Rigid A-Silicone Lab Putty

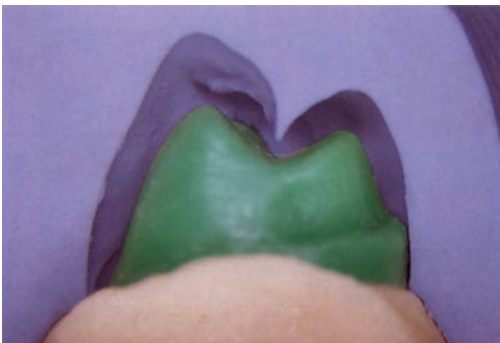
**Platinum 85** is an easy-to-use lab silicone characterized by high precision and long-term dimensional stability.

### APPLICATIONS

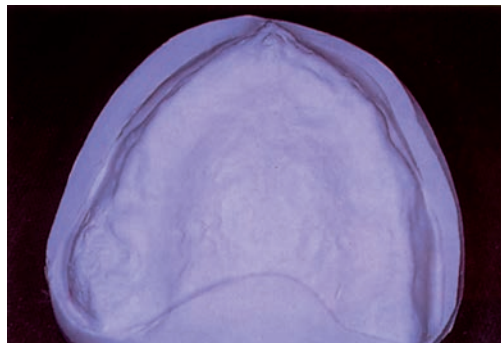
- Matrix to build partial or full dentures on the master model
- Ceramics technique printed in the verticulator
- Control matrix for designing metal structures
- Matrix support for metal-free aesthetic procedures
- Isolation of dentures in the flask
- Matrix for making temporary crowns/bridges

### ADVANTAGES

- Smooth surface
- Very high **heat resistance** (above 200°C)
- Excellent **definition of details**
- Minimum **linear dimensional change** after 24 hours (-0.058%)
- Chemically bonds to similar A-Silicones
- Easy-to-dose and mix



Control matrix for designing the metal structures



Die in total dentures

# PLATINUM 95

## Extra-Rigid A-Silicone Lab Putty

**Platinum 95** is an easy-to-use lab silicone characterized by high rigidity and long-term dimensional stability.

### APPLICATIONS

- Full denture relinings
- Ceramics technique printed in the verticulator
- Control matrix for designing the metal structures
- Models for dentures repair
- Bite registration key for positioning in articulator
- Matrix support for metal-free aesthetic procedures
- Insulation of dentures in the flask

### ADVANTAGES

- Very high **final hardness** (95 Shore A)
- Minimum **linear dimensional change** after 24 hours (-0.058%)
- Very high **heat resistance** (over 200°C)
- Chemically bonds to similar A-Silicones
- Easy-to-dose and mix



Ceramics technique printed in the verticulator

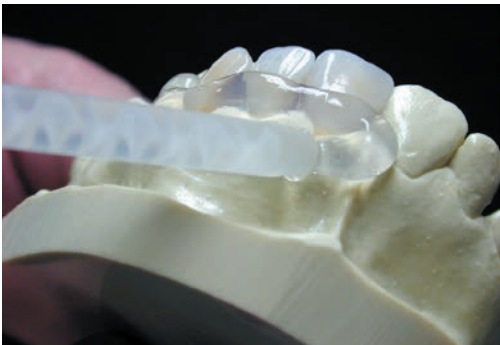
# ELITE TRANSPARENT

## Clear A-Silicone Fluid

**Elite Transparent** is a transparent and medium-consistency auto-mixing lab silicone that reproduces wax patterns faithfully and enables accurate reproduction in light-curing composite.

### ADVANTAGES

- Extreme **fluidity**
- High **transparency**
- Oxygen-free light-curing composite
- High final hardness: 72 Shore A
- Automatic dosing with 1:1 mixing cartridge



High fluidity during application



High degree of transparency



High rigidity to produce composite without deformations



Final result: does not effect the working properties of light-curing composites





**lab silicones solutions**  
**Simplify your work**

**Zhermack**   
Dental

# LAB SILICONES



## PACKAGING

C400791 ZETALABOR	900 g tub + measuring scoop
C400790 ZETALABOR	2.6 Kg tub + measuring scoop
C400798 ZETALABOR	5 Kg tub + measuring scoop + 2 x 60 ml tubes of Indurent Gel
C400811 ZETALABOR	5 Kg tub + measuring scoop
C400804 ZETALABOR	10 Kg tub + measuring scoop
C400812 ZETALABOR	25 Kg tub + measuring scoop
C400605 TITANIUM	2.6 Kg tub + measuring scoop
C400818 TITANIUM	5 Kg tub + measuring scoop + 2 x 60 ml tubes of Indurent Gel
C400611 TITANIUM	5 Kg tub + measuring scoop
C400727 PLATINUM (85 Shore A)	450 g tub of Base + 450 g tub of Catalyst
C400725 PLATINUM (85 Shore A)	1 Kg tub of Base + 1 Kg tub of Catalyst
C400723 PLATINUM (85 Shore A)	5 Kg tub of Base + 5 Kg tub of Catalyst
C400720 PLATINUM (95 Shore A)	450 g tub of Base + 450 g tub of Catalyst
C400700 PLATINUM (95 Shore A)	1 Kg tub of Base + 1 Kg tub of Catalyst
C400710 PLATINUM (95 Shore A)	5 Kg tub of Base + 5 Kg tub of Catalyst
C401600 ELITE TRANSPARENT	50 ml cartridge + 6 mixing tips (yellow)

### ZETALABOR - TITANIUM Accessories

C100700 INDURENT GEL	1 x 60 ml tube
----------------------	----------------

### ELITE TRANSPARENT Accessories

C202100 DISPENSER D2	D2 dispenser - 1:1
C202070 MIXING TIPS SMALL/YELLOW	Mixing tips, yellow (48 pcs)

## BRANCHES

### GERMANY

**Zhermack GmbH Deutschland**  
Öhlmühle 10 - D-49448 Marl

T +49 (0) 54 43 / 20 33 - 0  
F +49 (0) 54 43 / 20 33 - 11  
info@zhermack.de  
www.zhermack.de

### POLAND

**Zhermapol Sp. z o.o.**  
ul. Augustówka 14  
02 - 981 Warszawa - Polska

T +48 22 858 82 72  
+48 22 292 71 17  
F +48 22 642 07 14  
biuro@zhermack.com  
www.zhermapol.pl

### USA

**Zhermack Inc.**  
P.O. Box 4195, River Edge  
New Jersey 07661 - 4195

T +1 (877) 819 6206  
+1 (732) 389 8540  
F +1 (732) 389 8543  
info@zhermackusa.com  
www.zhermackusa.com